

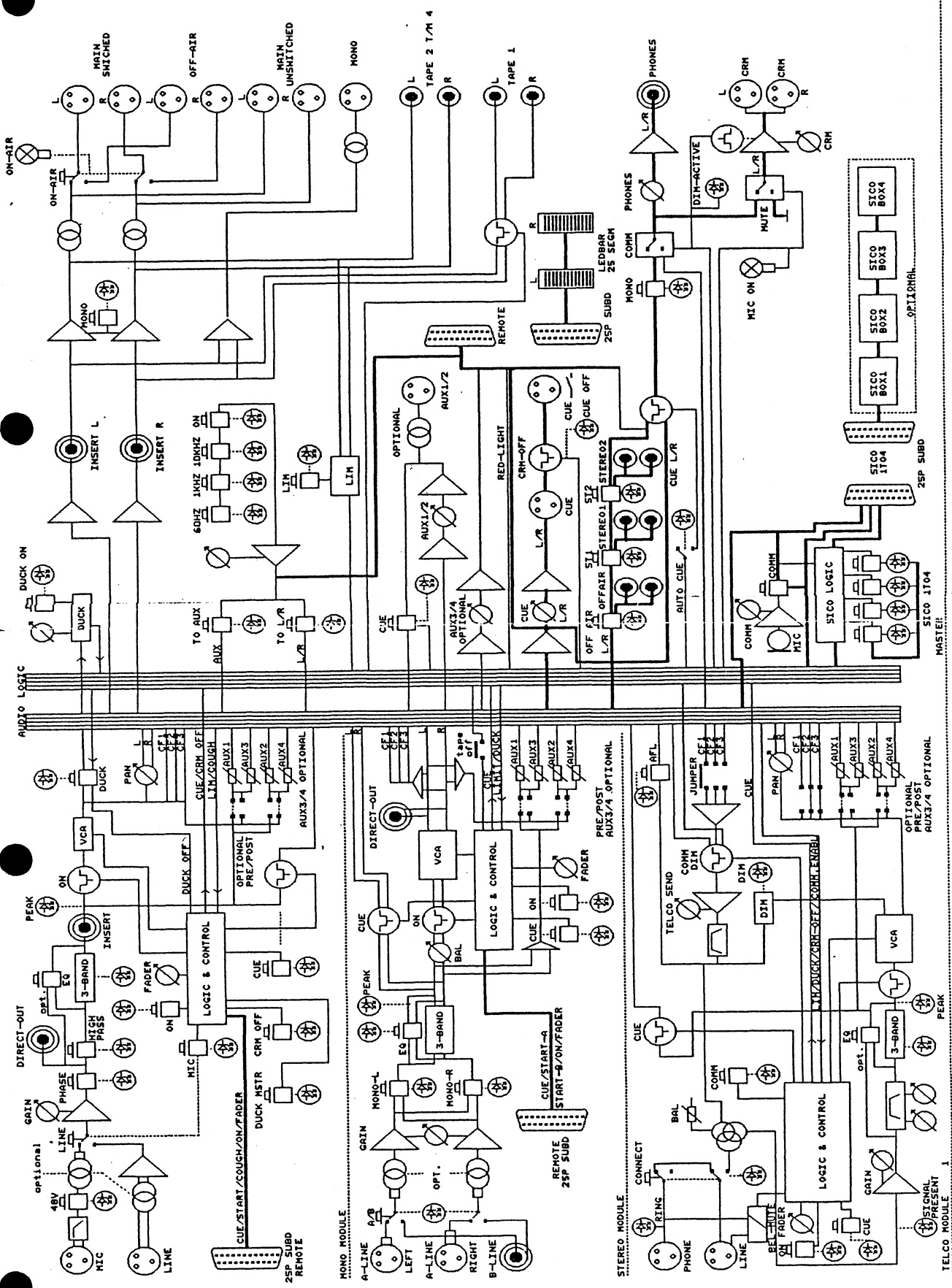


**mixing consoles**

# **AIRTEQ**

## **Service Manual**

**D&R Electronica BV**  
Rijnkade 15 B  
1382 GS Weesp  
The Netherlands  
Tel: ++31-2940-18014  
Fax: ++31-2940-16987





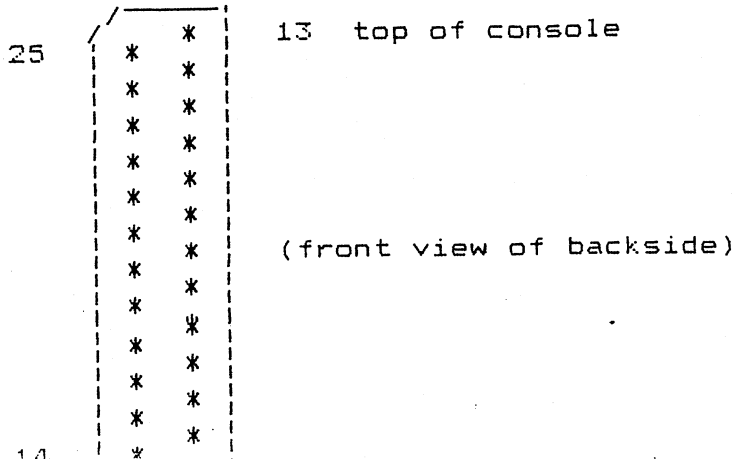
CONSOLE : AIRTEQ

DATE: 03 aug 1989

CONNECTOR : REMOTE (25p SUB-D female)  
 LOCATION : MONO/STEREO and TELCO CHANNEL

PIN NR.	NAME	DIRECTION of signal	ACTIVATED BY	LEVEL (dBu) referred to 0V audio	DC-LEVEL (Volt) referred to 0V logic active/non-active	PHASE	COMMENT
1	0 V-EXTERNAL	-	-	-	-	-	ONLY for EXTERNAL purposes
2	POWER EXTERNAL	output	-	-	+5	-	I <sub>max</sub> = 10mA - I <sub>pin</sub> 24
3	CUE LED (+)	output	-	-	-	-	I <sub>led</sub> = 12mA, connect led
4	CUE LED (-)	output	-	-	-	-	between pins 3 and 4
5	FADERSTART B (nc)	in/output	-	-	-	-	contact power :max. 3 W
6	FADERSTART B (cc)	out/input	-	-	-	-	contact current:max. 0.2 A
7	FADERSTART B (no)	in/output	-	-	-	-	contact voltage:max. 30 V
8	CUE (nc)	input	pin 9	-	-	-	max. input voltage : 6 V
9	CUE (cc)	output	-	-	+5 / +5	-	switch to pin 8 or pin 10
10	CUE (no)	input	pin 9	-	-	-	max. input voltage : 6 V
11	COUGH (nc)	input	pin 12	-	-	-	max. input voltage : 6 V
12	COUGH (cc)	output	-	-	+5 / +5	-	switch to pin 11 or pin 13
13	COUGH (no)	input	pin 12	-	-	-	max. input voltage : 6 V
14	ON (nc)	input	pin 15	-	-	-	max. input voltage : 6 V
15	ON (cc)	output	-	-	+5 / +5	-	switch to pin 14 or pin 16
16	ON (no)	input	pin 15	-	-	-	max. input voltage : 6 V
17	FADERSTART A (nc)	in/output	-	-	-	-	contact power :max. 3 W
18	FADERSTART A (cc)	out/input	-	-	-	-	contact current:max. 0.2 A
19	FADERSTART A (no)	in/output	-	-	-	-	contact voltage:max. 30 V
20	FADER (top)	output	-	-	0 (-) -5	-	depending on the chan.fader
21	FADER (slider)	input	-	-	-	-	use a linear fader of 10k
22	FADER (bottom)	output	-	-	-5 / -5	-	-
23	RING INDICATOR	output	-	-	0 / Z	-	use with pin 2 or pin 24
24	POWER EXTERNAL	output	-	-	+5	-	I <sub>max</sub> = 10mA - I <sub>pin</sub> 2
25	0 V-EXTERNAL	-	-	-	-	-	ONLY for EXTERNAL purposes

- \* nc = normally closed / cc = center contact / no = normally open
- Use a SPDT-switch (break before make) for the CUE, COUGH and ON function SPDT: cc \_\_\_/ \_\_\_ no
- \* FADERSTART B is only available on the AIRTEQ stereo channel
- \* COUGH-function is only available on the AIRTEQ mono channel
- \* FADERSTART A and B and COUGH-function are not available on the telco channel
- \* RING INDICATOR is only available on the telco channel. Pin 23 may be used to drive a LED or a small relais which should be driven from pin 2 or pin 24. 'Z' means a high-impedance-state, '0' means 0V-EXTERNAL GROUND with a imp. of 100 ohm
- \* DO NOT TRY TO CONNECT the 0V-AUDIO GROUND to the 0V-EXTERNAL GROUND, or this will DEGRADE the AUDIO PERFORMANCE of the console !





CONSOLE : AIRTEQ

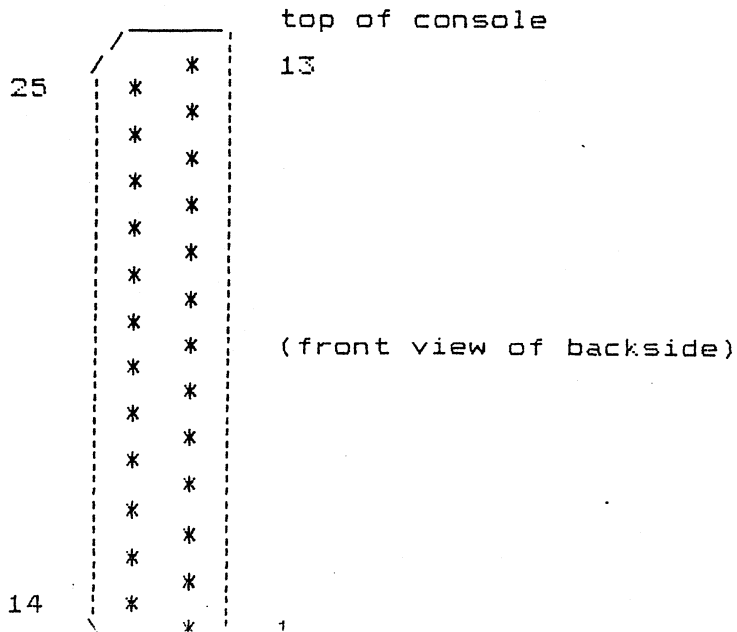
DATE: 21 juni 1989

CONNECTOR : METER/REMOTE (25p SUB-D female)  
 LOCATION : MASTER-SECTION

PIN NR.	NAME	DIRECTION of signal	ACTIVATED BY	LEVEL (dBu) referred to 0V audio	DC-LEVEL (Volt) referred to to 0V logic active/non-active	PHASE	COMMENT
1	OSCILLATOR	output	-	-00 / +14	-	in	activated by TONE-ON sw
2	0 V-AUDIO	-	-	-	-	-	ONLY for AUDIO purposes
3	0 V-AUDIO	-	-	-	-	-	ONLY for AUDIO purposes
4	0 V-AUDIO	-	-	-	-	-	ONLY for AUDIO purposes
5	0 V-AUDIO	-	-	-	-	-	ONLY for AUDIO purposes
6	LEDBAR RIGHT	output	-	+6	-	in	shows monitor select
7	LEDBAR POWER -	output	-	-	-18 / -18	-	use ONLY for HR-LEDBAR
8	LEDBAR POWER +	output	-	-	+18 / +18	-	use ONLY for HR-LEDBAR
9	n.c.	-	-	-	-	-	reserved
10	MAIN RIGHT	output	-	+6	-	in	unswitched
11	MAIN LEFT	output	-	+6	-	in	unswitched
12	AUX/4	output	-	+6	-	in	optional
13	AUX/3	output	-	+6	-	in	optional
14	AUX/4 internal	(output)	-	0	-	out	ONLY for metering
15	AUX/3 internal	(output)	-	0	-	out	ONLY for metering
16	AUX/2 internal	(output)	-	0	-	out	ONLY for metering
17	AUX/1 internal	(output)	-	0	-	out	ONLY for metering
18	LEDBAR LEFT	output	-	+6	-	in	shows monitor sel./ CUE
19	0 V-AUDIO	-	-	-	-	-	ONLY for AUDIO purposes
20	0 V-LEDBAR	-	-	-	-	-	ONLY for LEDBAR purposes
21	ON-AIR	output	-	-	-16 / +16	-	imp. act:1k8 non-act:2k7
22	0 V-AUDIO	-	-	-	-	-	ONLY for AUDIO purposes
23	0 V-AUDIO	-	-	-	-	-	ONLY for AUDIO purposes
24	0 V-AUDIO	-	-	-	-	-	ONLY for AUDIO purposes
25	0 V-AUDIO	-	-	-	-	-	ONLY for AUDIO purposes

\* Pin 21 is reserved for an external stand-alone ON-AIR unit

\* DO NOT TRY TO CONNECT the 0V-AUDIO GROUND to the 0V-LEDBAR GROUND, or this will DEGRADE the AUDIO PERFORMANCE of the console !





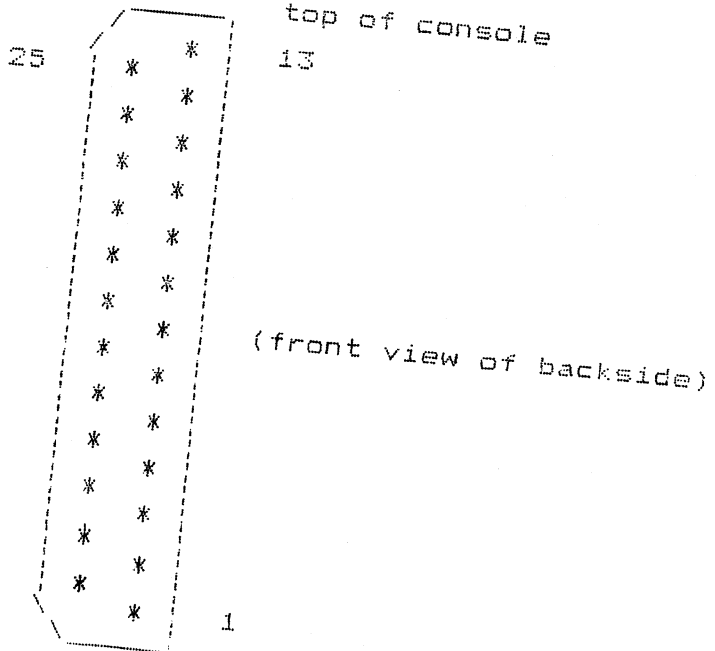
CONSOLE : AIRTEQ

CONNECTOR : SICO 1-4 (25p SUB-D female)  
 LOCATION : MASTER-SECTION

DATE: 26 febr 1990

PIN NR.	NAME	DIRECTION of signal	ACTIVATED BY	LEVEL (dBu) referred to 0V audio	DC-LEVEL (Volt) referred to 0V logic active/non-active	PHASE	COMMENT
1	MONO-CUE	output	-	-	-	-	
2	COUGH SICO/1	input	0 V-logic	+6	-	in	
3	COUGH SICO/3	input	0 V-logic	-	0 / -16	-	
4	CRM-MUTE	output	-	-	0 / -16	-	only if jumper selection is made on channel-pcb's
5	SELECT SICO/2	in/output	0 V-logic	-	-16 / +16	-	
6	SELECT SICO/4	in/output	0 V-logic	-	0 / -16	-	
7	HYBRID-BUSS	in/output	-	-	0 / -16	-	
8	MASTER LEFT	output	-	-6	-	-	
9	MASTER RIGHT	output	-	+6	-	in	buss impedance 600 ohm
10	AUX/1	output	-	+6	-	in	
11	AUX/2	output	-	+6	-	in	
12	MASTER ACTIVE	output	-	+6	-	in	
13	TELCO ACTIVE	output	-	+6	-	in	
14	0 V-logic	input	0 V-logic	-	0 / -16	in	
15	COUGH SICO/2	input	-	-	0 / -16	-	
16	COUGH SICO/4	input	0 V-logic	-	-	-	
17	SELECT SICO/1	in/output	0 V-logic	-	0 / -16	-	ONLY for LOGIC-purposes
18	SELECT SICO/3	in/output	0 V-logic	-	0 / -16	-	only if jumper selection is made on channel-pcb's
19	0 V-logic	-	-	-	0 / -16	-	
20	0 V-logic	-	-	-	0 / -16	-	
21	0 V-AUDIO	-	-	-	-	-	ONLY for LOGIC purposes
22	0 V-AUDIO	-	-	-	-	-	ONLY for LOGIC purposes
23	0 V-AUDIO	-	-	-	-	-	ONLY for AUDIO purposes
24	0 V-AUDIO	-	-	-	-	-	ONLY for AUDIO purposes
25	SICO ACTIVE	input	0 V-logic	-	0 / -16	-	ONLY for AUDIO purposes

\* When pins are in a non-active mode, they are also in a high-impedance state (except for pin 4)  
 \* DO NOT TRY TO CONNECT the 0V-AUDIO GROUND to the 0V-LOGIC GROUND, or this will DEGRADE the AUDIO PERFORMANCE of the console !



AIRTEQ MAIN BUSS-CONNECTOR (CONN.1 on PCB)

date : 26-05-1989

pin nr.	function	PCB1	PCB2	PCB3	PCB4	PCB5	PCB6	PCB7	PCB8
		mono	ster.	telco	tone	aux	L+R	comm	CRM
1	+ 5 V			<-			<-	->	
2	earth mstr	<-	<-	<-	->	<-	<-	<-	<-
3	duck send	->					<-		
4	- 5 V			<-			<-	->	
5	clean feed 1	->	->	<-/->					
6	earth mstr	<-	<-	<-	->	<-	<-	<-	<-
7	clean feed 2	->	->	<-/->					
8	earth mstr	<-	<-	<-	->	<-	<-	<-	<-
9	clean feed 3	->	->	<-/->					
10	earth mstr	<-	<-	<-	->	<-	<-	<-	<-
11	right signal	->	->	->	->		<-		
12	right earth	->	->	->	->		<-		
13	earth mstr	<-	<-	<-	->	<-	<-	<-	
14	left earth	->	->	->	->		<-		
15	left signal	->	->	->	->		<-		
16	earth mstr	<-	<-	<-	->	<-	<-	<-	<-
17	aux 2	->	->	->	->	<-			
18	aux 2 earth	->	->	->	->	<-			
19	aux 4	->	->	->	->	<-			
20	aux 4 earth	->	->	->	->	<-			
21	aux 1	->	->	->	->	<-			
22	aux 1 earth	->	->	->	->	<-			
23	aux 3	->	->	->	->	<-			
24	aux 3 earth	->	->	->	->	<-			
25	cue left	->	->	->		<-			
26	earth mstr	<-	<-	<-	->	<-	<-	<-	<-
27	cue right	->	->	->		<-			
28	+ 48 phantome	<-			->				
29	+ 18 V audio +Vs	<-	<-	<-	->	<-	<-	<-	<-
30	+ 18 V audio +Vs	<-	<-	<-	->	<-	<-	<-	<-
31	+ 18 V audio +Vs	<-	<-	<-	->	<-	<-	<-	<-
32	- 18 V audio -Vs	<-	<-	<-	->	<-	<-	<-	<-
33	- 18 V audio -Vs	<-	<-	<-	->	<-	<-	<-	<-
34	- 18 V audio -Vs	<-	<-	<-	->	<-	<-	<-	<-

AIRTEQ DIGITAL BUSS-CONNECTOR (CONN.2 on PCB)

date : 26-05-1989

pin	function	PCB1	PCB2	PCB3	PCB4	PCB5	PCB6	PCB7	PCB8
		mono	ster.	telco	tone	aux	l+r	comm	crm
1	CRM dim							->	<-
2	earth logic	<-	<-	<-	->	<-	<-	<-	<-
3	limit return	<-	<-	<-			->		
4	earth logic	<-	<-	<-	->	<-	<-	<-	<-
5	cue send	->	->	->		->			
6	earth logic	<-	<-	<-	->	<-	<-	<-	<-
7	CRM off	->		<-		<-	<-		<-
8	earth logic	<-	<-	<-	->	<-	<-	<-	<-
9	duck return	<-	<-	<-			->		
10	cough from sico 1	<-						->	
11	TAPE off		->				<-		
12	cough from sico 2	<-						->	
13	comm. enable			<-				->	
14	cough from sico 3	<-						->	
15	+ 18 V logic +Vs1	<-	<-	<-	->	<-	<-	<-	<-
16	+ 18 V logic +Vs1	<-	<-	<-	->	<-	<-	<-	<-
17	cough from sico 4	<-						->	
18	- 18 V logic -Vs1	<-	<-	<-	->	<-	<-	<-	<-
19	- 18 V logic -Vs1	<-	<-	<-	->	<-	<-	<-	<-
20	hybrid-buss			<->				<->	

-> = signal leaving PCB  
 <- = signal entering PCB  
 <-> = signal which can enter and leave the PCB



-----  
CONSOLE : AIRTEQ

DATE: 24 juli 1989

PROCEDURE : AUX-ATTENUATION adjust procedure

LOCATION : MASTER-SECTION (AIRTEQ-5 / VR1,VR2 (,VR3,VR4) )  
-----

Below, an example for the AUX1-output is given:

OSCILLATOR SETUP : sinus / 10kHz / +10dBu / symmetric and floating  
-----

MIXINGCONSOLE SETUP:  
-----

Input : Microphone-channel (AIRTEQ-1) / line-input

Output : AUX1 on the mastermodule (AIRTEQ-5)

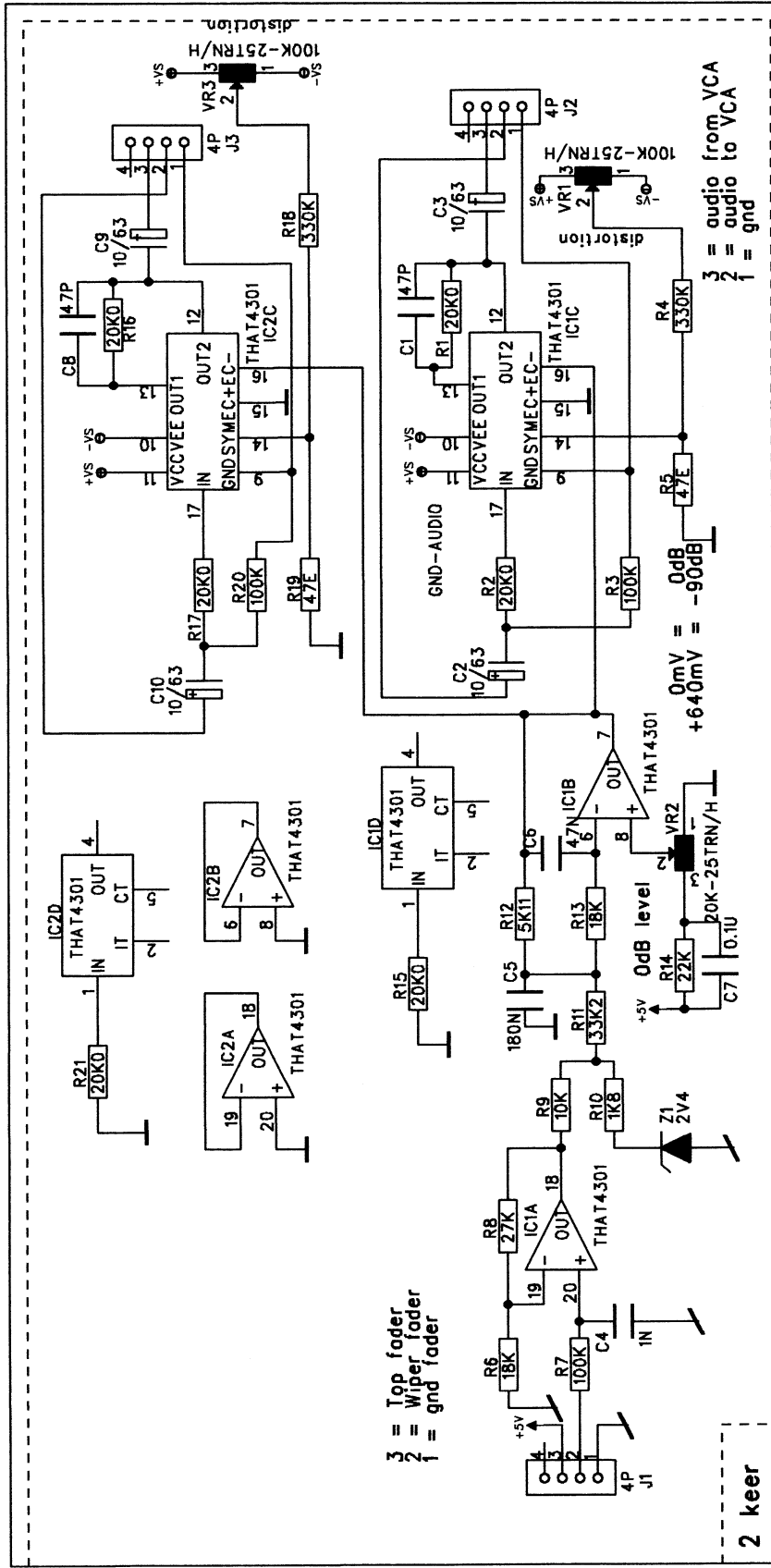
Microphone-channel setup : Function Position

Switch:	duck mstr	off
	CRM off	off
	+48V	off
	line	on
	phase	off
	high-pass	off
	eq	off
	on	on
	cue	off

Rotary-controls :	pan	C
	aux1/aux2	0
	high/mid/low	0 (12 o'clock)
	gain	about 12 o'clock
	fader	@ 0dB

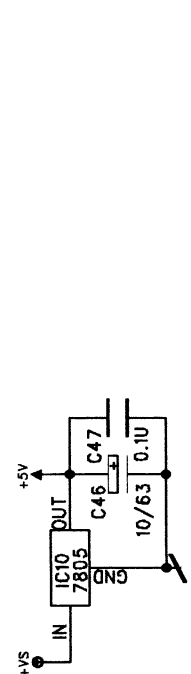
Indication: peak-led should not be activated

- Turn the AUX1 control on the mastermodule to its maximum
- Turn the AUX1 control on the microphone-channel at max. (10)  
The AUX1 output should give a level of about +20dBu, adjust this to +20.0 dBu by turning the gain control on the microphone-channel
- Turn the AUX1 control on the channel to min. (0)
- Measure with a sharp 10kHz bandpass filter the residual signal, (wich sometimes must be filtered out of the low noise floor) and minimise this by turning the VR1 10-turn trimpotentiometers on the AIRTEQ-5 pcb.  
(Use VR1 for AUX1 / VR2 for AUX2 / VR3 for AUX3 / VR4 for AUX4)
- REMARK : When a channel is added to - or removed from the mastermodule, VR1,2,3 and 4 should be adjusted again to obtain a maximum audio attenuation, when the AUX controls on the channels are at their zero (0) position.

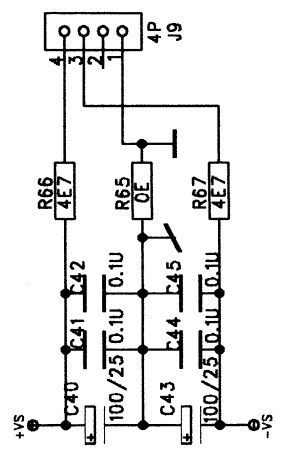
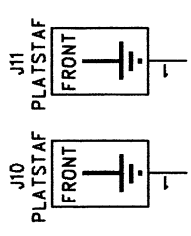


3 = Top fader  
 2 = Wiper fader  
 1 = gnd fader

2 keer



3 = audio from VCA  
 2 = audio to VCA  
 1 = gnd



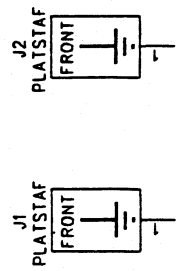
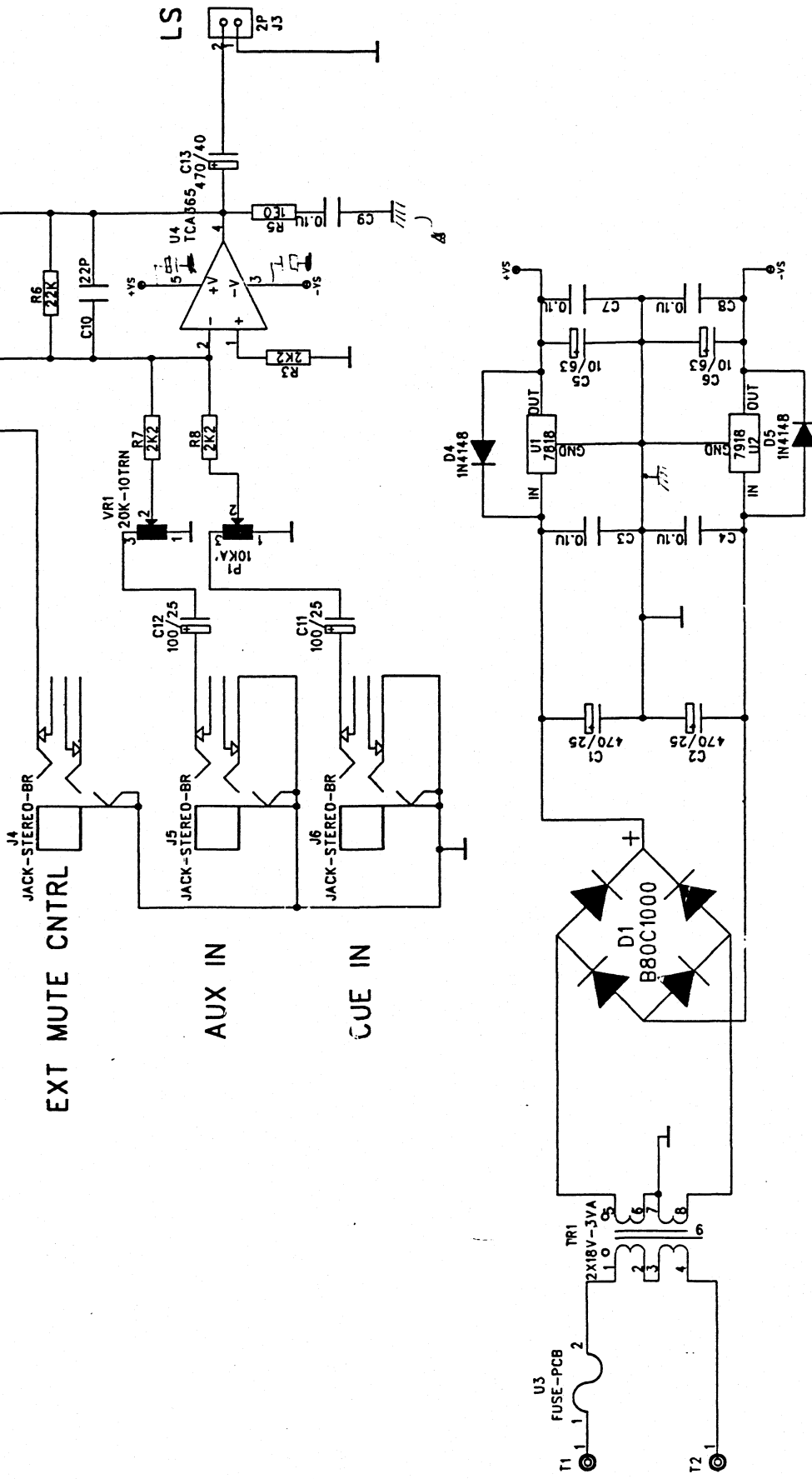
**DR**

Riinkode 15b  
 1382 GS Weesp  
 The Netherlands  
 phone: 02940-18014  
 fax: 02940-16987

**Title:** VCA control Master Airteq  
**Date:** 04-10-1993  
**Rev:** A

Sheet: 1 of 1





Rijnkode 15b  
 1382 GS Weesp  
 The Netherlands  
 phone: 02940-18014  
 fax: 02940-16987

D&R Electronica B.V.

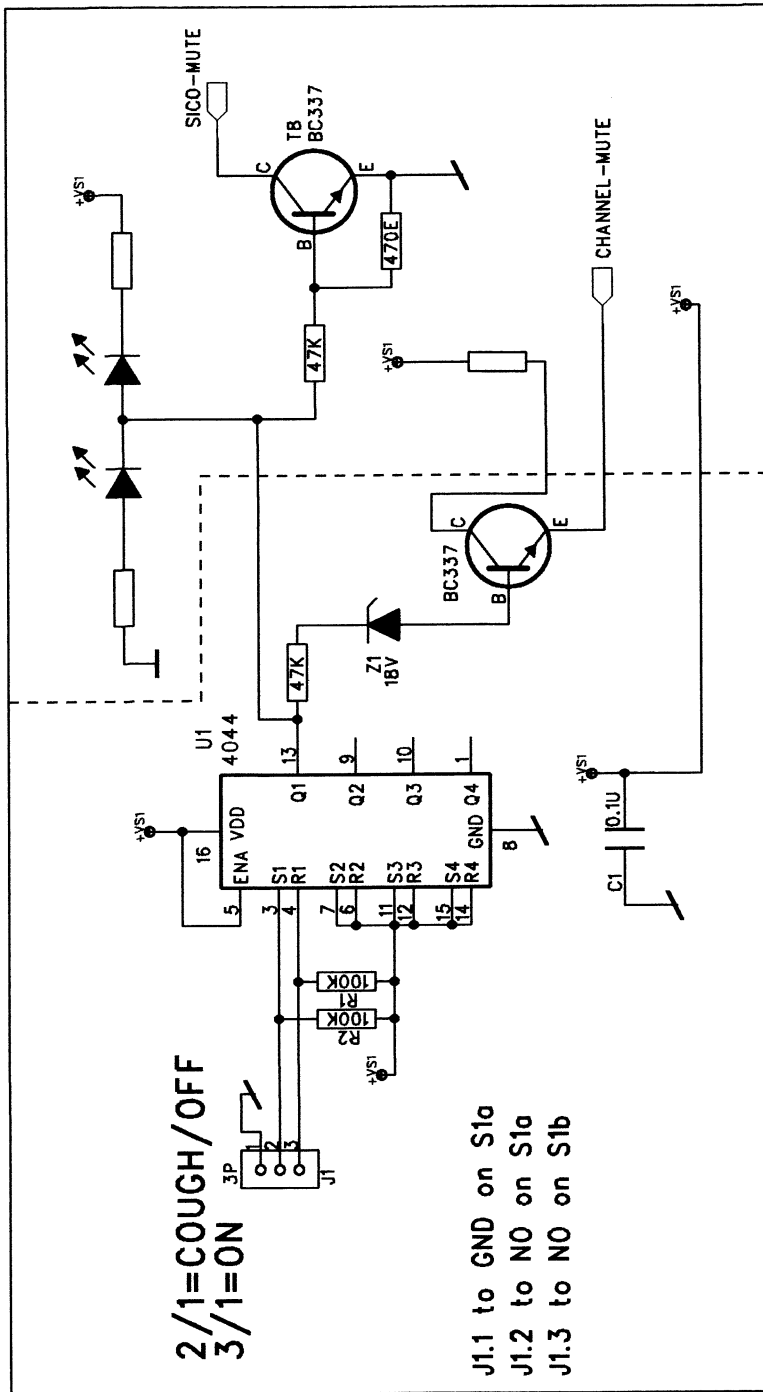
Title: CUEAMP

Date: OCTOBER 1993

Sheet: \_\_\_\_\_ of \_\_\_\_\_


Rev:

A



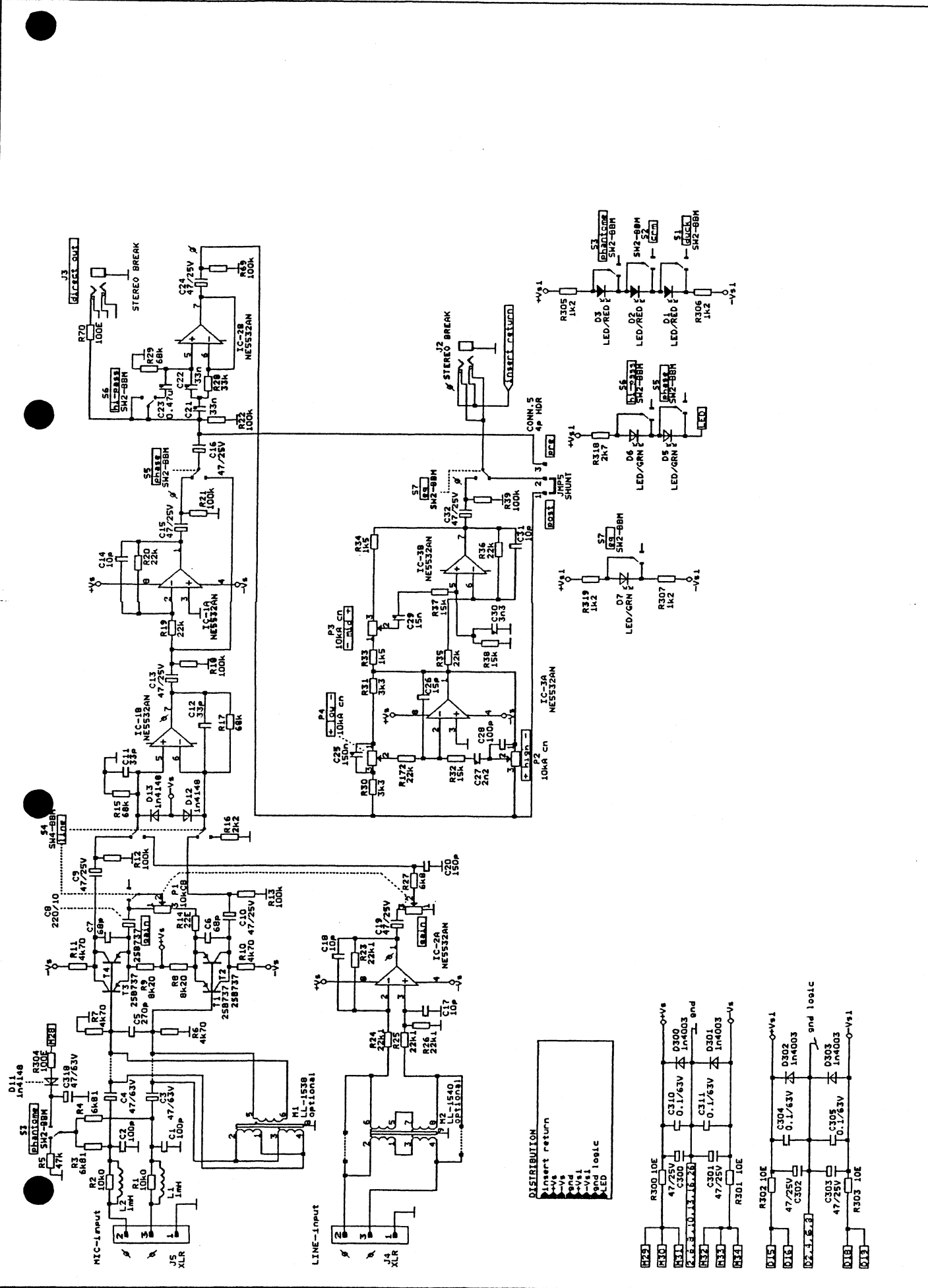
2/1=COUGH/OFF  
3/1=ON

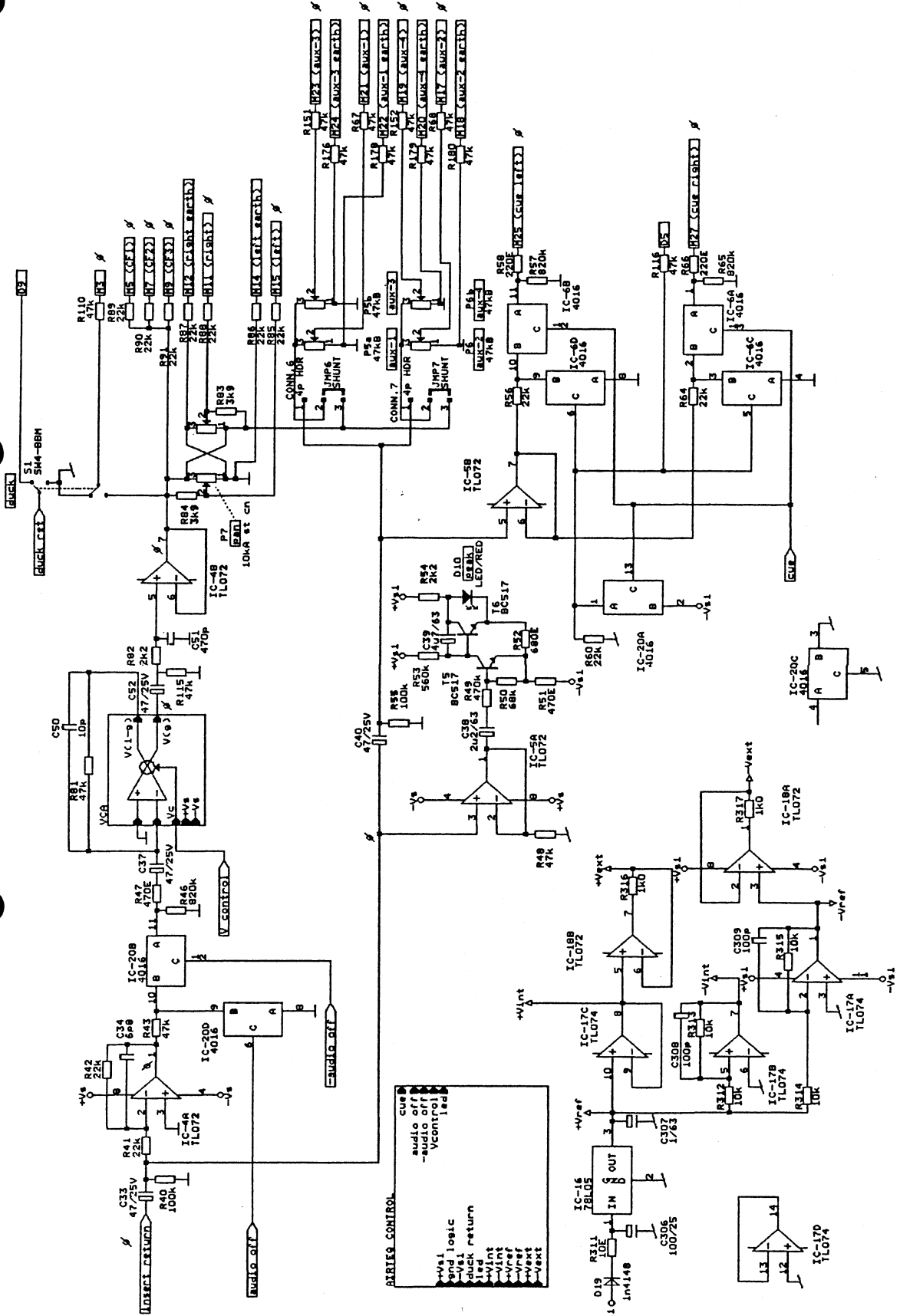
J1.1 to GND on S1a  
J1.2 to NO on S1a  
J1.3 to NO on S1b

	Riinkade 15b 1382 GS Weesp The Netherlands phone: 02940-18014 fax: 02940-16987	
	<b>Title: SICO-BOX ON/OFF</b>	
	<b>Date: 15-11-1993</b>	<b>Rev: A</b>
<b>Sheet: 1 of 1</b>		

AIRTEQ

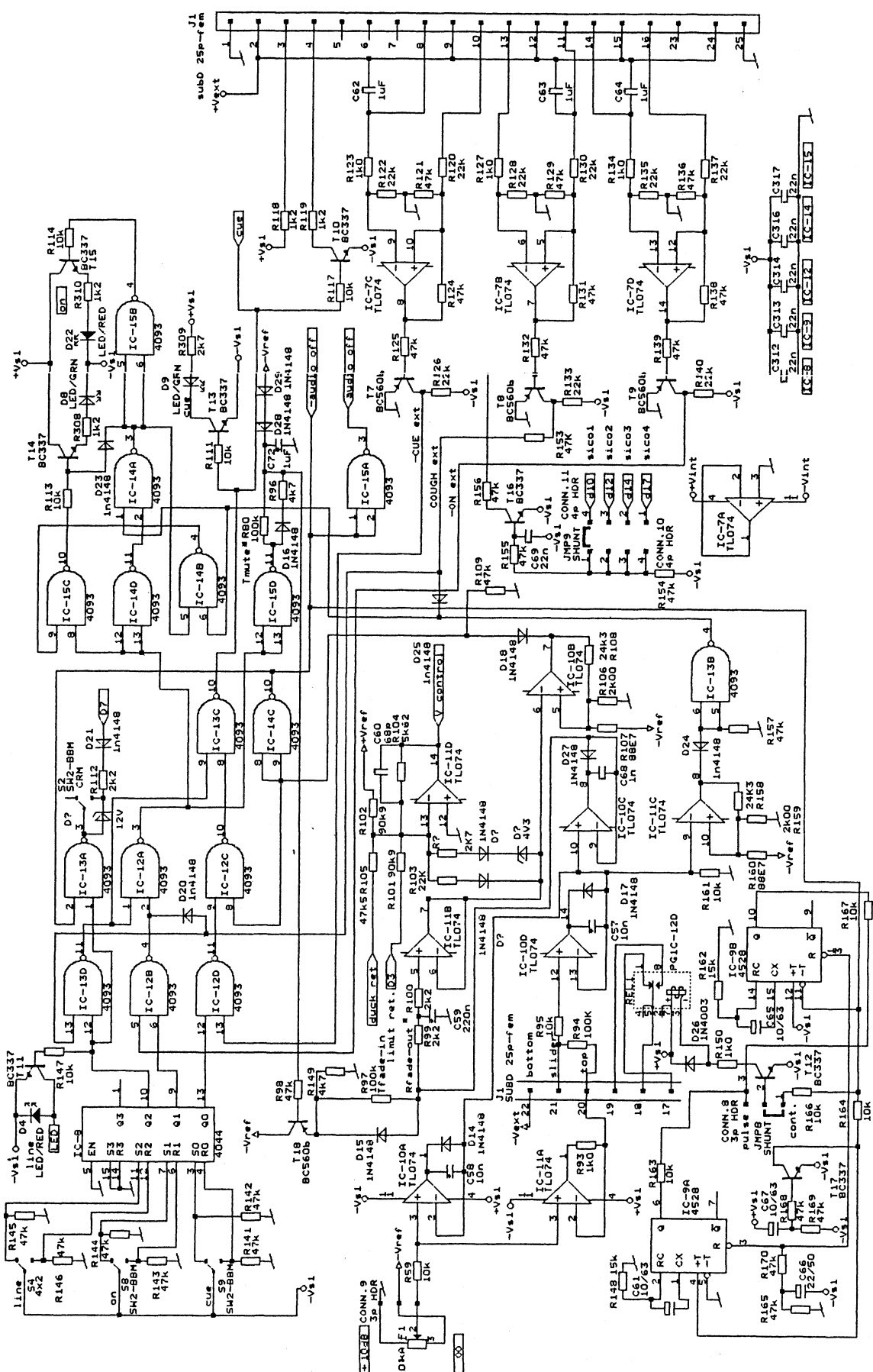
1





THIS DRAWING REPLACES PREVIOUS ONES		AIRTEQ-1 MONO CHANNEL
INDEX	BY	SIZE
1382	55	MEESSP
3	03-85	30
11-05-89	11-05-89	22-12-1988
DATE	DATE	DATE
BY J. de Vries	BY J. de Vries	BY J. de Vries
CHK N. H. de Groot	CHK N. H. de Groot	CHK N. H. de Groot
DRN P. H. de Groot	DRN P. H. de Groot	DRN P. H. de Groot
Electronica bv. HOLLAND		J. de Vries & Burchhammer
		Date: December 22, 1988
		Sheet 2 of 4

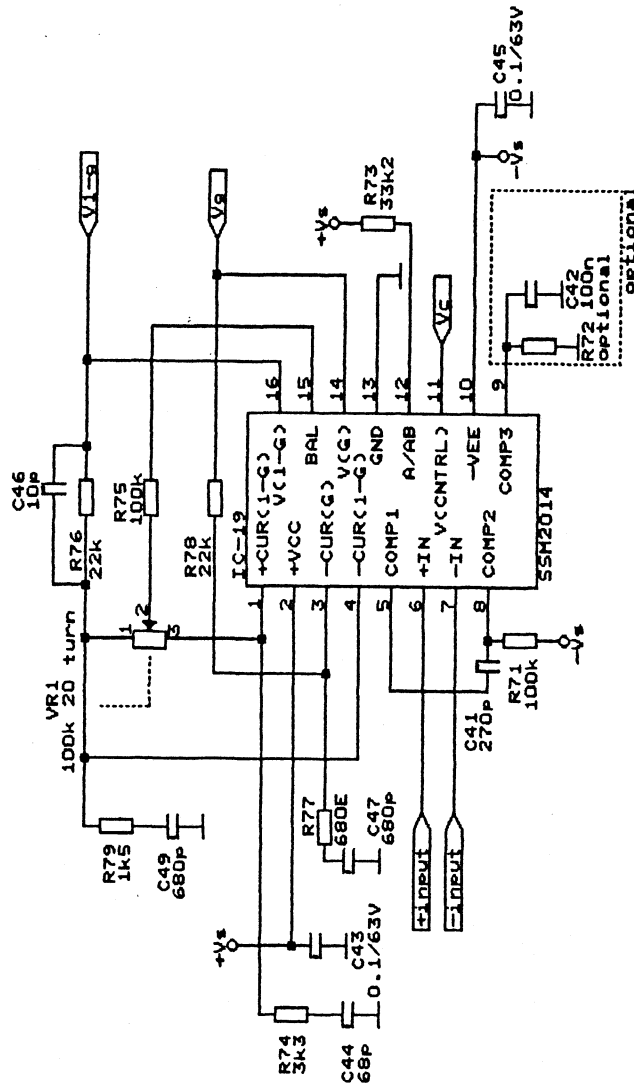
**D&R**  
 RIJNhede 15b  
 1382 55 MEESSP  
 T. 02940-1888  
 F. 02940-1897  
 E. J. de Vries



THIS DRAWING REPLACES PREVIOUS ONES	
INDEX	REV
155	1
1322 GS WEESP	2
132940-1004	3
02340-0111	4
02340-0111	5
02340-0111	6
02340-0111	7
02340-0111	8
02340-0111	9
02340-0111	10
02340-0111	11
02340-0111	12
02340-0111	13
02340-0111	14
02340-0111	15
02340-0111	16
02340-0111	17
02340-0111	18
02340-0111	19
02340-0111	20
02340-0111	21
02340-0111	22
02340-0111	23
02340-0111	24
02340-0111	25
02340-0111	26
02340-0111	27
02340-0111	28
02340-0111	29
02340-0111	30
02340-0111	31
02340-0111	32
02340-0111	33
02340-0111	34
02340-0111	35
02340-0111	36
02340-0111	37
02340-0111	38
02340-0111	39
02340-0111	40
02340-0111	41
02340-0111	42
02340-0111	43
02340-0111	44
02340-0111	45
02340-0111	46
02340-0111	47
02340-0111	48
02340-0111	49
02340-0111	50
02340-0111	51
02340-0111	52
02340-0111	53
02340-0111	54
02340-0111	55
02340-0111	56
02340-0111	57
02340-0111	58
02340-0111	59
02340-0111	60
02340-0111	61
02340-0111	62
02340-0111	63
02340-0111	64
02340-0111	65
02340-0111	66
02340-0111	67
02340-0111	68
02340-0111	69
02340-0111	70
02340-0111	71
02340-0111	72
02340-0111	73
02340-0111	74
02340-0111	75
02340-0111	76
02340-0111	77
02340-0111	78
02340-0111	79
02340-0111	80
02340-0111	81
02340-0111	82
02340-0111	83
02340-0111	84
02340-0111	85
02340-0111	86
02340-0111	87
02340-0111	88
02340-0111	89
02340-0111	90
02340-0111	91
02340-0111	92
02340-0111	93
02340-0111	94
02340-0111	95
02340-0111	96
02340-0111	97
02340-0111	98
02340-0111	99
02340-0111	100

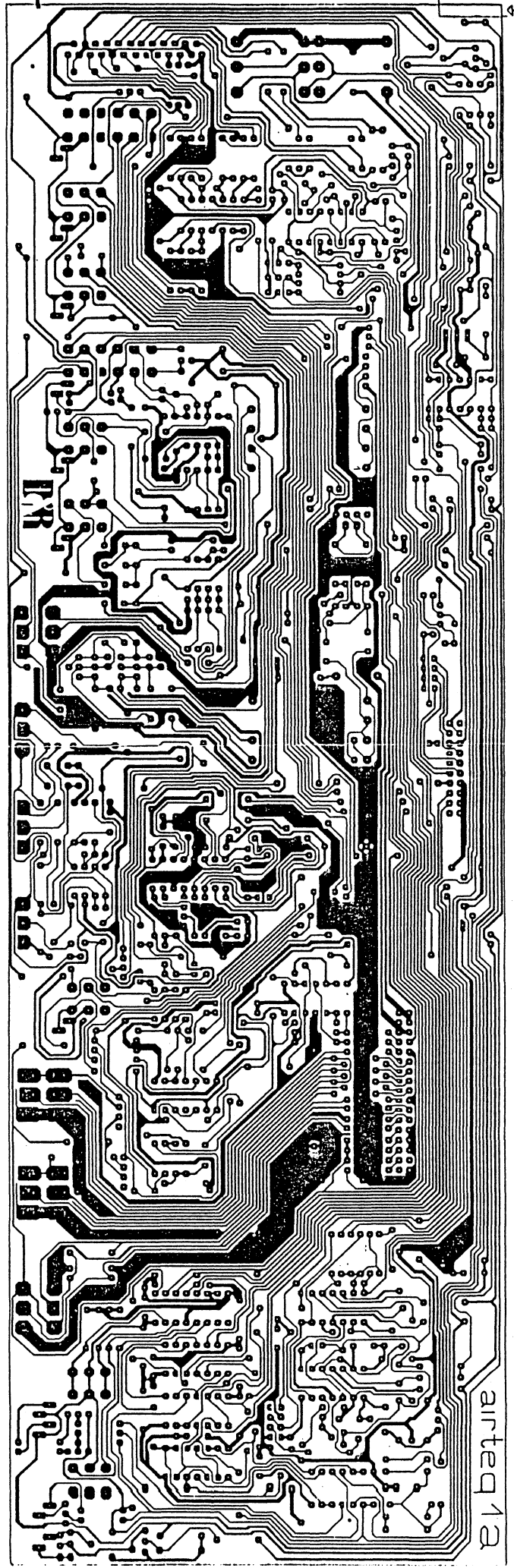
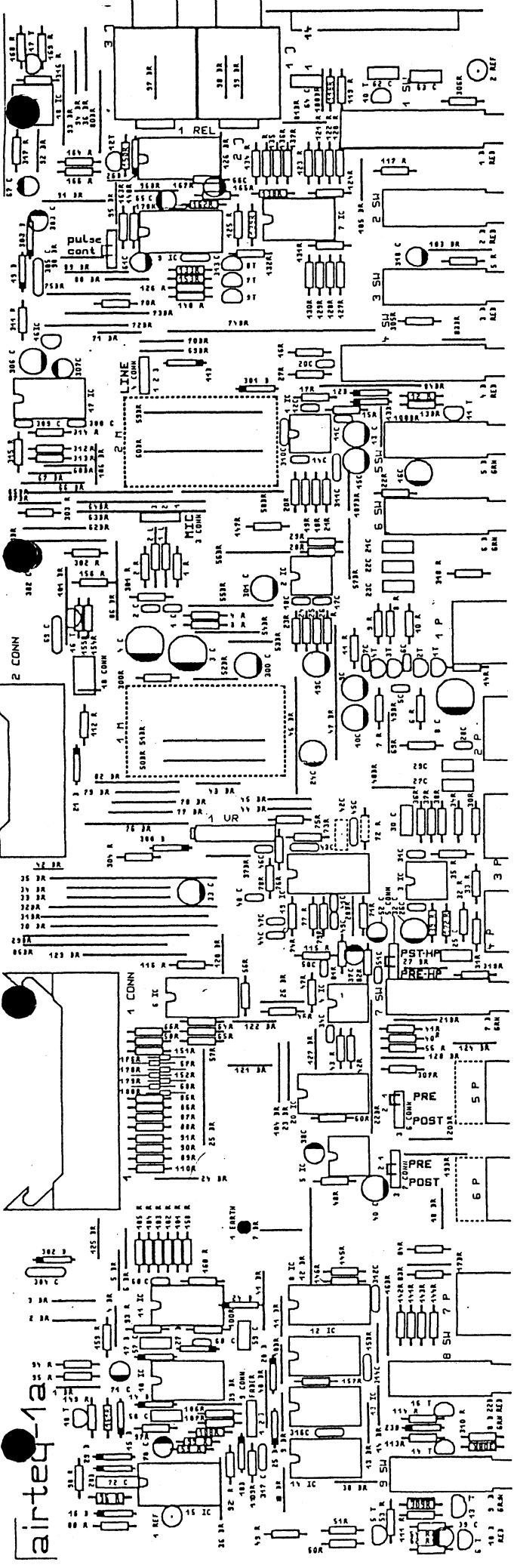
RI: made 15B  
 1322 GS WEESP  
 132940-1004  
 Tel: 02340-0111  
 Fax: 02340-0111  
 HOLLAND  
 Electronic by

THIS DRAWING REPLACES PREVIOUS ONES  
 INDEX REV  
 155 1  
 1322 GS WEESP 2  
 132940-1004 3  
 02340-0111 4  
 02340-0111 5  
 02340-0111 6  
 02340-0111 7  
 02340-0111 8  
 02340-0111 9  
 02340-0111 10  
 02340-0111 11  
 02340-0111 12  
 02340-0111 13  
 02340-0111 14  
 02340-0111 15  
 02340-0111 16  
 02340-0111 17  
 02340-0111 18  
 02340-0111 19  
 02340-0111 20  
 02340-0111 21  
 02340-0111 22  
 02340-0111 23  
 02340-0111 24  
 02340-0111 25  
 02340-0111 26  
 02340-0111 27  
 02340-0111 28  
 02340-0111 29  
 02340-0111 30  
 02340-0111 31  
 02340-0111 32  
 02340-0111 33  
 02340-0111 34  
 02340-0111 35  
 02340-0111 36  
 02340-0111 37  
 02340-0111 38  
 02340-0111 39  
 02340-0111 40  
 02340-0111 41  
 02340-0111 42  
 02340-0111 43  
 02340-0111 44  
 02340-0111 45  
 02340-0111 46  
 02340-0111 47  
 02340-0111 48  
 02340-0111 49  
 02340-0111 50  
 02340-0111 51  
 02340-0111 52  
 02340-0111 53  
 02340-0111 54  
 02340-0111 55  
 02340-0111 56  
 02340-0111 57  
 02340-0111 58  
 02340-0111 59  
 02340-0111 60  
 02340-0111 61  
 02340-0111 62  
 02340-0111 63  
 02340-0111 64  
 02340-0111 65  
 02340-0111 66  
 02340-0111 67  
 02340-0111 68  
 02340-0111 69  
 02340-0111 70  
 02340-0111 71  
 02340-0111 72  
 02340-0111 73  
 02340-0111 74  
 02340-0111 75  
 02340-0111 76  
 02340-0111 77  
 02340-0111 78  
 02340-0111 79  
 02340-0111 80  
 02340-0111 81  
 02340-0111 82  
 02340-0111 83  
 02340-0111 84  
 02340-0111 85  
 02340-0111 86  
 02340-0111 87  
 02340-0111 88  
 02340-0111 89  
 02340-0111 90  
 02340-0111 91  
 02340-0111 92  
 02340-0111 93  
 02340-0111 94  
 02340-0111 95  
 02340-0111 96  
 02340-0111 97  
 02340-0111 98  
 02340-0111 99  
 02340-0111 100



THIS DRAWING REPLACES PREVIOUS ONES		Size Document Number	
INDEX	a	J.de Vries	h
REV	b	J.de Vries	h
DATE	19-04-89	J.de Vries	22-12-1989
DESIGN	11-05-89	J.de Vries	A
DRAWN	P.Milicke	J.de Vries	R.Berghammer
			Date: December 22, 1989
			Sheet 4 of 4

**DR**  
 Electronics by HOLLAND  
 Rijkswaade 15b  
 1382 GS MEEPS  
 Tel: 02940-18014  
 Fax: 02940-16987



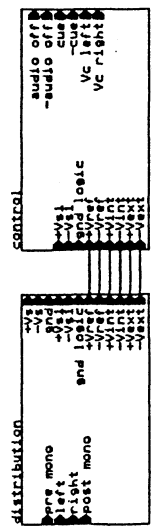
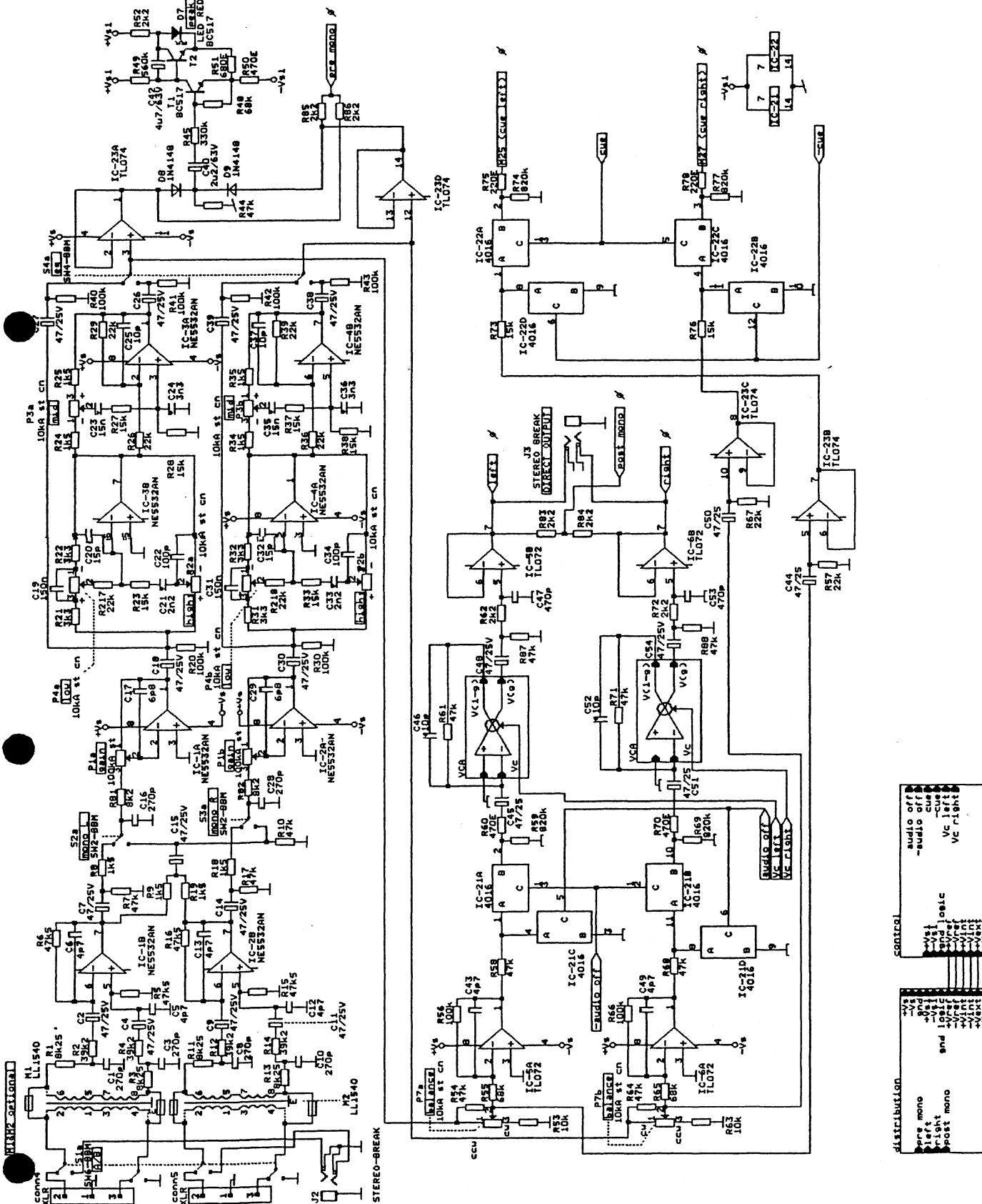
airtec-12

airtec-12



AIRTEQ

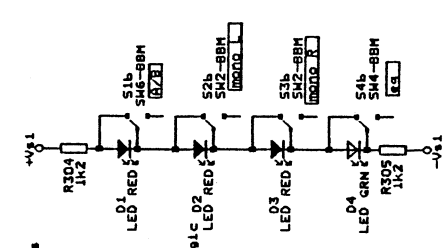
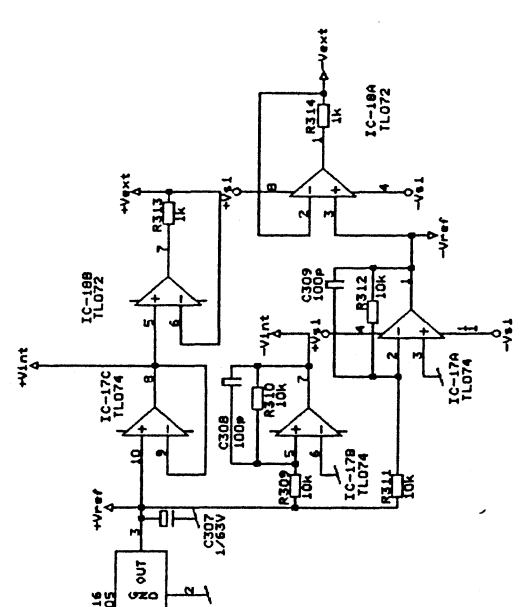
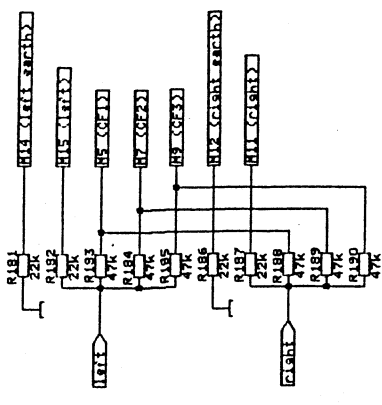
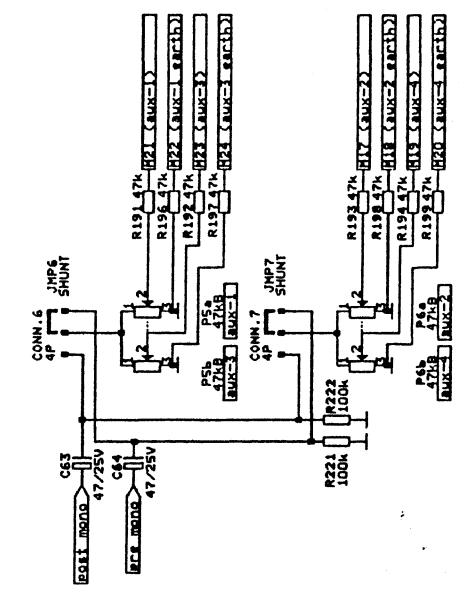
2



AIRTEQ STEREO MODULE  
 THIS DRAWING REPLACES PREVIOUS ONES  
 DRAWN BY J. de Vries  
 DATE 13-10-88  
 SIZE Document Number  
 B AIRTEQ-2 main diagram (airteq2)  
 REV a  
 P. HICKS J. de Vries R. Benschmann  
 DATE: December 22, 1989 Street 1 of 5  
 AIRTEQ-2 main diagram (airteq2)  
 REV a  
 P. HICKS J. de Vries R. Benschmann  
 DATE: December 22, 1989 Street 1 of 5



DR  
 Electronics B.V.  
 HOLLAND  
 Tel: 02940-18014  
 Fax: 02940-16987  
 10-05-89  
 J. de Vries

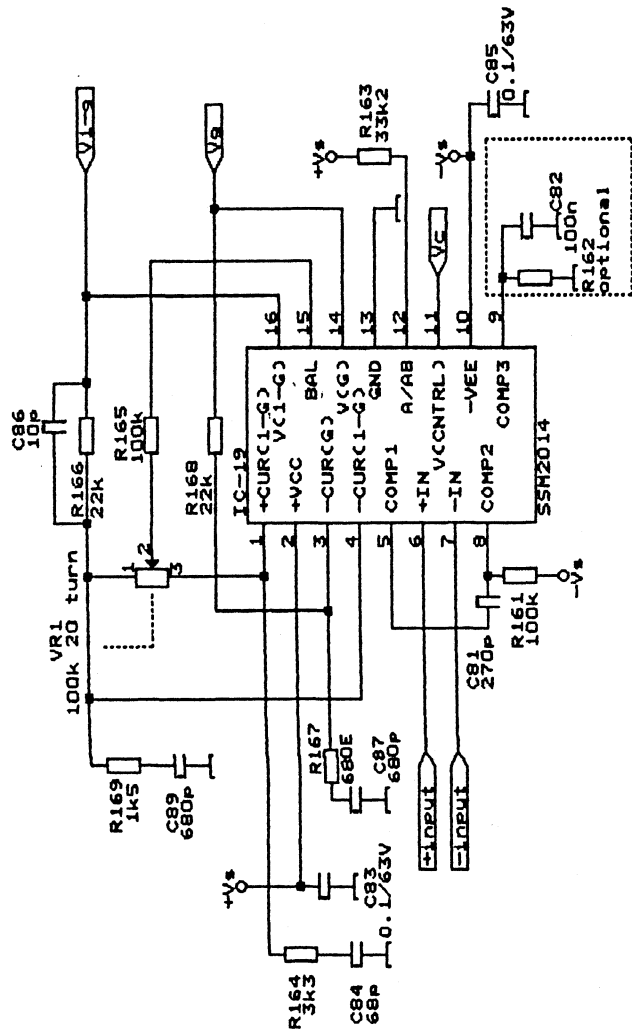


**D&R**  
 Electronics by HOLLAND

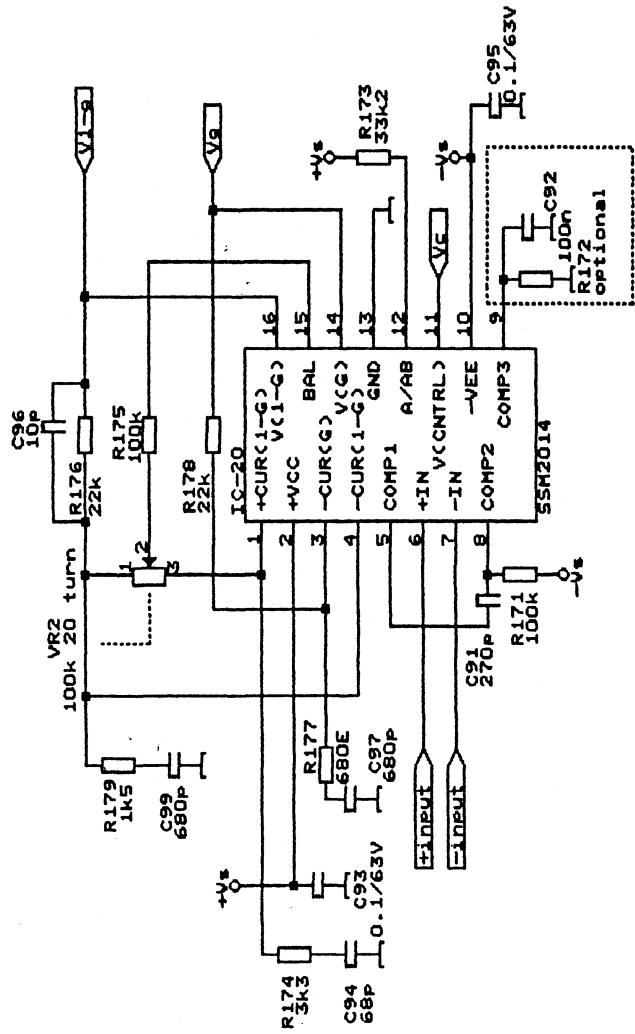
THIS DRAWING REPLACES PREVIOUS ONES  
 DRAWN BY J. de Vries  
 DESIGNED BY P. MICHIE  
 CHECKED BY J. de Vries  
 DATE: 22-12-1989  
 FILE: 02940-1989  
 TITEL: AIRTEQ-2

AIRTEQ-2 distribution (air2distr)  
 AIRTEQ-2 distribution (air2distr)  
 December 22, 1989 Sheet 2 of 2

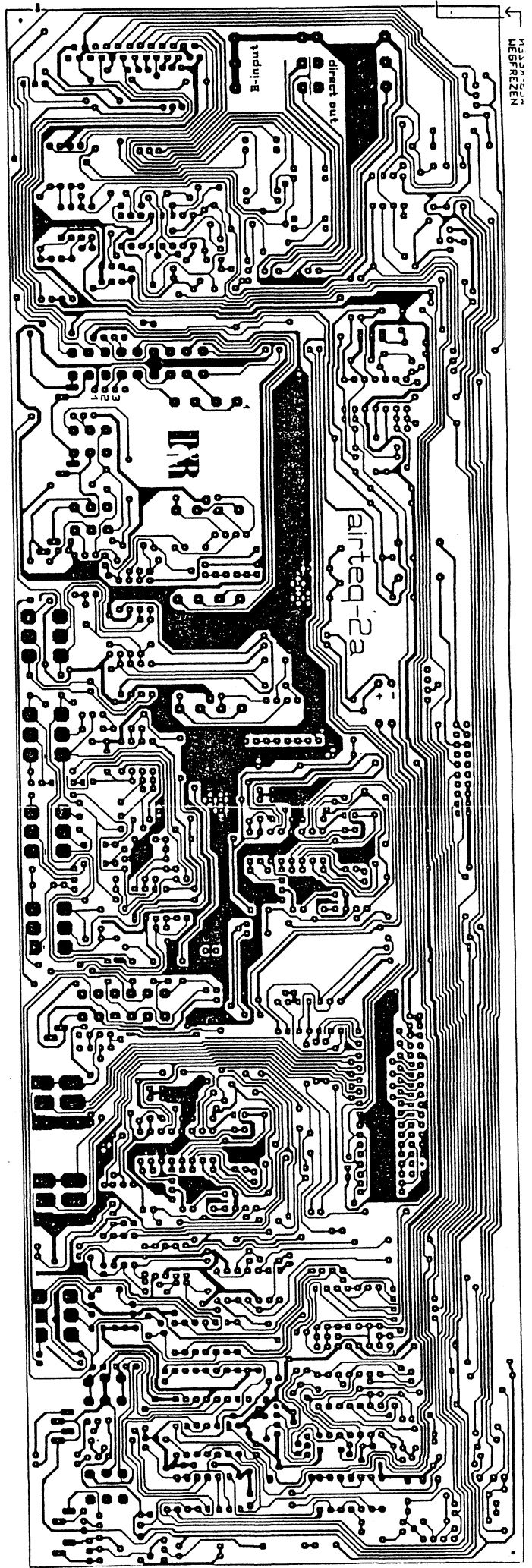
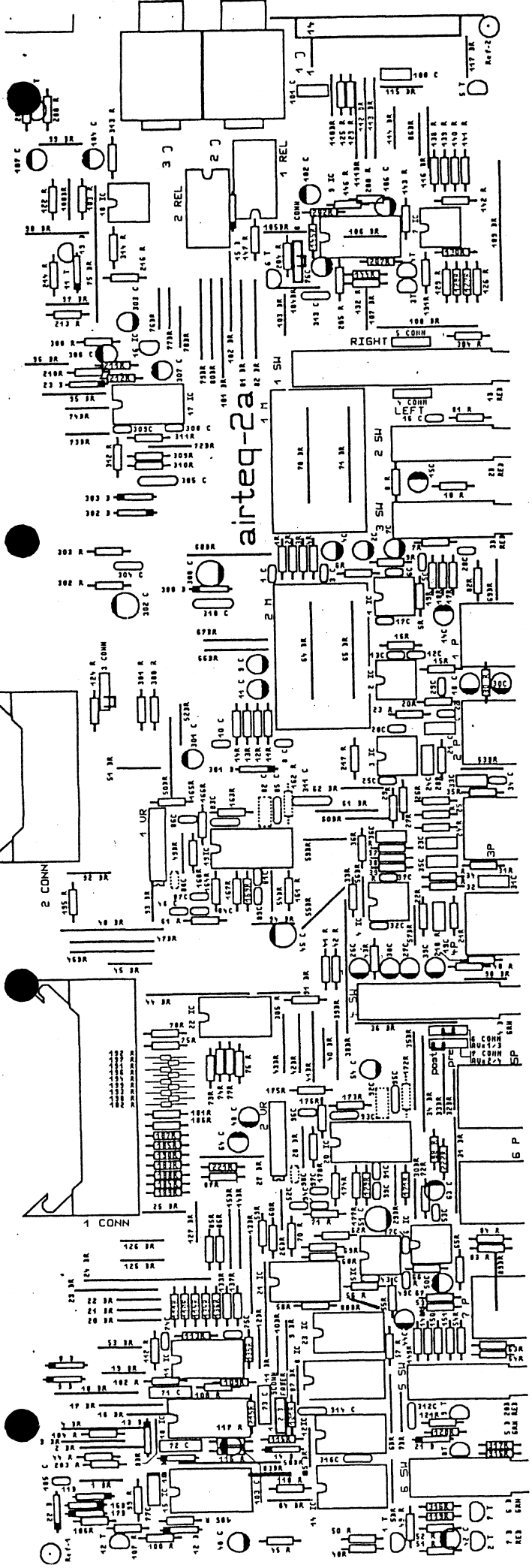




<b>Electronica by HOLLAND</b> RLinkade 15b 1392 GS HEESP Tel: 02940-18014 Fax: 02940-16987 Tlx: 16503 dr nl P.O. Box 16503 NL-3720 AA HOLLAND		THIS DRAWING REPLACES PREVIOUS ONES		AIRTEQ STEREO MODULE	
INDEX	J. de Vries	J. de Vries	J. de Vries	Size	Document Number
MOD. BY	30-05-1988	30-05-1989	22-12-1989	A	AIRTEQ-2 VCA Left (air2Lvca)
DATE	P. HILCKE	J. de Vries	R. Berghammer	Date:	December 22, 1989 Sheet
DESIGN					4 of 5
DRAWN					



Rlinkade 15b 1382 CS HEESP Tel: 02940-18014 Fax: 02940-16967 Tlx: 18503 dr ni Electronica by HOLLAND		THIS DRAWING REPLACES PREVIOUS ONES		AIRTEQ STEREO MODULE	
INDEX	P	J. de Vries	J. de Vries	Size	Document Number
MO. BY		30-05-1988	22-12-1989	A	AIRTEQ-2 VCA Right (air-2Rvca)
DATE		30-05-1988	22-12-1989		REV
DESIGN		J. de Vries	J. de Vries		December 22, 1989 Sheet 5 of 5
DRAWN		P. HILERS	J. de Vries		



## AIRTEQ STEREO MODULE

Bill Of Materials

December 22, 1989

13:30:23

Page

1

Item	Quantity	Reference	Part
1	2	T1,T2	BC517
2	4	D7,D1,D2,D3	LED RED
3	4	R77,R59,R69,R74	820k
4	2	R75,R78	220E
5	4	R2,R4,R12,R14	39k2
6	6	R6,R5,R15,R16,R114,R134	47k5
7	10	R9,R8,R18,R19,R24,R25, R34,R35,R169,R179	1k5
8	46	R10,R7,R17,R44,R54,R58, R61,R64,R68,R71,R87,R88, R107,R118,R124,R127,R130, R131,R140,R142,R143,R148, R149,R150,R151,R183,R184, R185,R188,R189,R190,R191, R192,R193,R194,R195,R196, R197,R198,R199,R207,R208, R209,R213,R214,R216	47k
9	16	R20,R30,R40,R41,R42,R43, R56,R66,R105,R106,R161, R165,R171,R175,R221,R222	100k
10	22	R26,R29,R36,R39,R57,R67, R126,R128,R132,R139,R141, R144,R166,R168,R176,R178, R181,R182,R186,R187,R217, R218	22k
11	10	R27,R23,R28,R33,R37,R38, R73,R76,R145,R202	15k
12	1	R49	560k
13	3	R50,R60,R70	470E
14	3	R51,R167,R177	680E
15	9	R52,R62,R72,R83,R84,R85, R86,R108,R109	2k2
16	17	R53,R63,R104,R119,R120, R121,R122,R146,R200,R203, R204,R205,R215,R309,R310, R311,R312	10k
17	3	R55,R48,R65	68k
18	2	R81,R82	8k2
19	8	C1,C3,C8,C10,C16,C28,C81, C91	270p
20	21	C2,C4,C7,C9,C11,C14,C15, C18,C26,C27,C30,C38,C39, C48,C54,C63,C64,C300, C301,C302,C303	47/25V
21	6	C6,C5,C12,C13,C43,C49	4p7
22	2	C17,C29	6p8



## IRTEQ STEREO MODULE

Bill Of Materials

December 22, 1989

13:30:23

Page

2

Item	Quantity	Reference	Part
23	4	C22,C34,C308,C309	100p
24	4	IC-1,IC-2,IC-3,IC-4	NE5532AN
25	4	IC-6,IC-5,IC-7,IC-18	TL072
26	6	C46,C25,C37,C52,C86,C96	10p
27	2	C47,C53	470p
28	4	IC-23,IC-10,IC-11,IC-17	TL074
29	2	IC-21,IC-22	4016
30	2	P1a,P1b	100kA st
31	8	P3b,P2a,P2b,P3a,P4a,P4b, P7a,P7b	10kA st cn
32	1	J3	STEREO BREAK
33	6	S2a,S2b,S3a,S3b,S5a,S6a	SW2-BBM
34	2	S4a,S4b	SW4-BBM
35	6	R1,R3,R11,R13,R112,R135	8k25
36	2	M2,M1	LL1540
37	9	D9,D8,D10,D11,D12,D13, D14,D16,D17	1N4148
38	1	J2	STEREO-BREAK
39	6	R21,R22,R31,R32,R164, R174	3k3
40	2	C19,C31	150n
41	2	C21,C33	2n2
42	2	C20,C32	15p
43	2	C35,C23	15n
44	2	C36,C24	3n3
45	1	R45	330k
46	1	C40	2u2/63V
47	1	C42	4u7/63V
48	4	C45,C44,C50,C51	47/25
49	2	conn4,conn5	XLR
50	2	S1a,S1b	SW6-BBM
51	4	C89,C87,C97,C99	680p
52	4	C84,C74,C75,C94	68p
53	8	C85,C83,C93,C95,C304, C305,C310,C311	0.1/63V
54	2	VR1,VR2	100k 20 turn
55	2	IC-19,IC-20	SSM2014
56	2	R162,R172	optional
57	2	R163,R173	33k2
58	2	C82,C92	100n
59	5	R300,R301,R302,R303,R308	10E
60	5	CONN.6,CONN.3,CONN.7, CONN.8,CONN.9	4P
61	4	JMP6,JMP3,JMP7,JMP8	SHUNT
62	4	P5a,P5b,P6a,P6b	47kB
63	6	R304,R123,R125,R305,R315,	1k2

## AIRTEQ STEREO MODULE

Bill Of Materials

December 22, 1989

13:30:23

Page

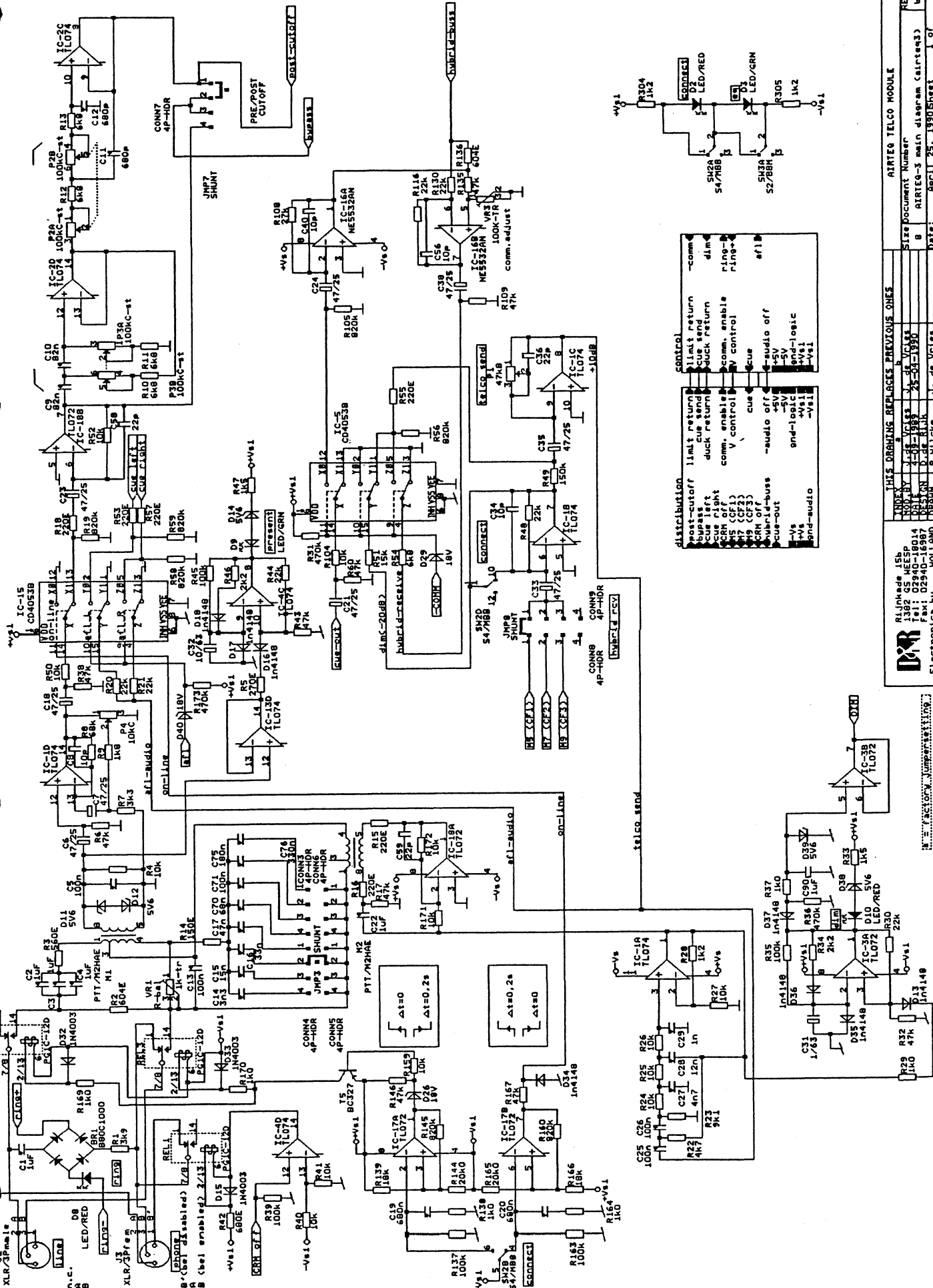
3

Item	Quantity	Reference	Part
		R317	
64	2	C307,C103	1/63V
65	4	R313,R102,R103,R314	1k
66	1	IC-16	78L05
67	1	C306	100/25V
68	4	D19,D21,D22,D23	1n4148
69	1	CONN.1	MLX5578-34P
70	5	D300,D15,D301,D302,D303	1N4003
71	1	CONN.2	MLX5578-20p
72	2	D4,D6	LED GRN
73	3	IC12,IC14,IC15	4093
74	1	IC8	4044
75	2	C72,C71	10n
76	2	R113,R137	5k62
77	2	R116,R210	162E
78	3	T3,T4,T12	BC560b
79	4	R129,R101,R138,R147	1k0
80	4	R111,R110,R133,R136	90k9
81	1	J1	subD 25p-fem
82	4	C312,C313,C314,C316	22n
83	1	R316	2k7
84	6	T5,T6,T7,T8,T9,T10	BC337
85	1	SW1	S2-BBM
86	2	R115,R211	2k43
87	3	C102,C76,C107	10/63
88	1	C105	1n
89	2	R212,R117	48k7
90	1	C104	1/63
91	1	C73	220n
92	1	F1	10kA
93	3	C100,C77,C101	1uF
94	1	D5	LED-GRN
95	1	D20	LED-RED
96	2	R100,R99	4k7
97	1	T11	BC327
98	1	C106	22/50
99	1	IC-9	4528
100	2	REL1,REL2	PG1C-12D →

AIRTEQ

3

FOR INTERNAL USE ONLY



- |             |              |       |
|-------------|--------------|-------|
| post-cutoff | limit return | -comm |
| bypass      | cue send     | dim   |
| cue left    | duck return  | ring- |
| DCM of V    | comm. enable | ring+ |
| V15 (CF1)   | v control    | af1 B |
| V17 (CF2)   | cue          |       |
| V18 (CF3)   | -audio off   |       |
| audio-buss  | -5V          |       |
| cue-out     | and-logic    |       |
|             | -Vs          |       |
|             | -Vs1         |       |
|             | and-audio    |       |

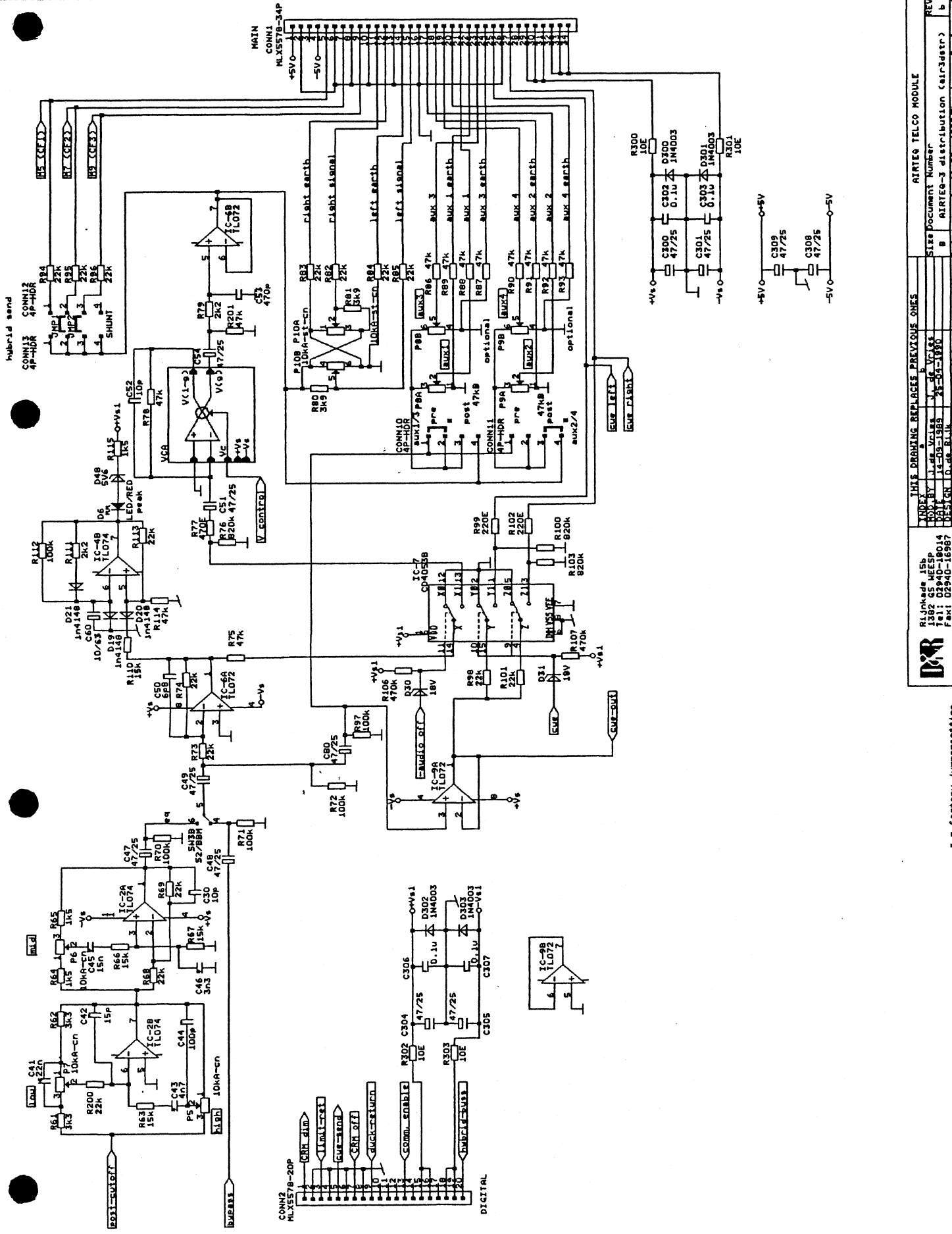
THIS DRAWING REPLACES PREVIOUS ONES		
DATE	BY	REV
2-28-1990	J. de Vries	1
25-04-1990	J. de Vries	2
AIRTEQ TELCO MODULE		
Size Document Number		
b AIRTEQ-3 main diagram (airtreq3)		
Date:	April 25, 1990	Sheet 1 of 4
Electronics by:	HOLLAND DRINN P. MILLS	J. de Vries

**D&R**  
Alkemade 15B  
Postbox 100  
5215 ZG Gorinchem  
Tel: 02940-18014  
Fax: 02940-16967

Electronic by: HOLLAND DRINN P. MILLS

DATE: APRIL 25, 1990

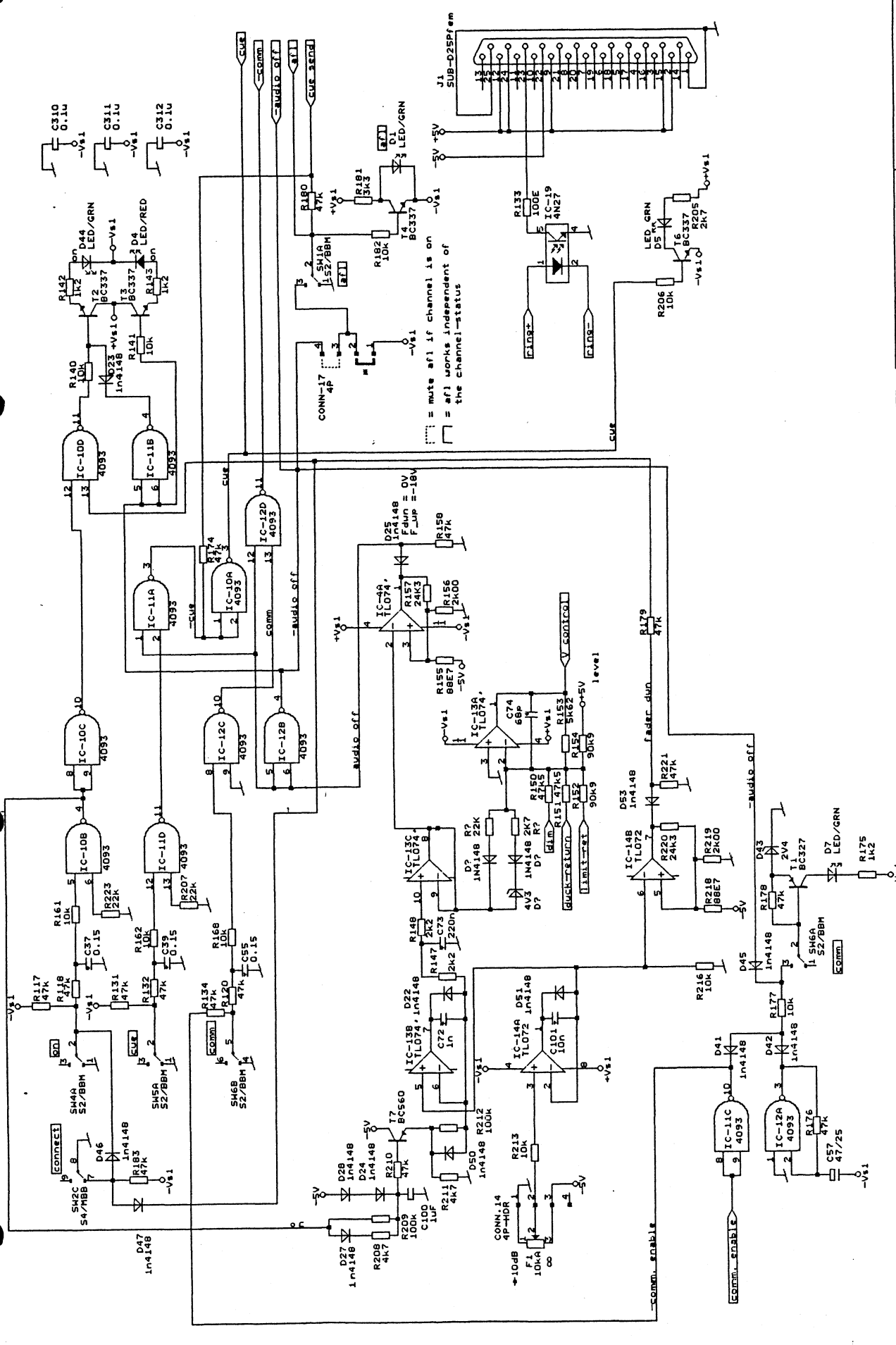
SHEET 1 OF 4



AIRTEQ TELCO MODULE	
THIS DRAWING REPLACES PREVIOUS ONES	SIZE DOCUMENT NUMBER
REVISED BY J.A.S. BALK	REV b
DATE 14-09-1988	DATE April 25, 1990
DESIGN J. de BLIK	DESIGN J.A.S. BALK
DRAWN J.G.V. Hezck J. de Vries	Date: April 25, 1990
Electronics by HOLLAND	2 of 4

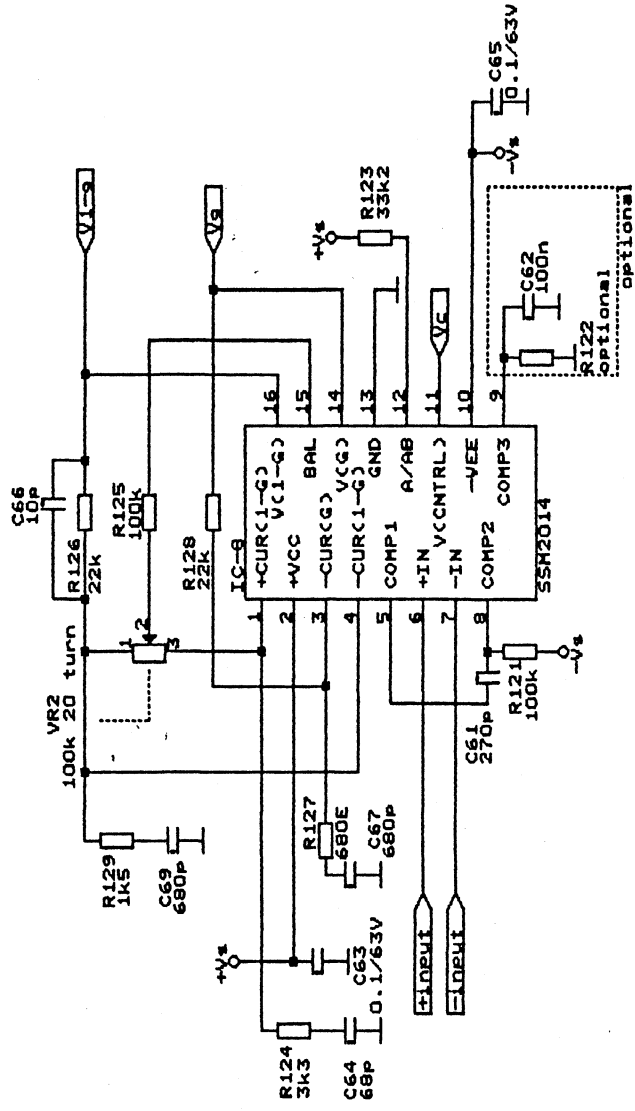
ALJmhdw 15B  
1812 02940-18014  
1812 02940-16987  
Fax: 02940-16987

factory Jumpssetting



= mute af1 if channel is on  
 = af1 works independent of the channel-status

REV	SIZE	DATE	BY	CHECKED	INDEX	DESCRIPTION
1	B	1991-12-17	R. Berghammer	J. de Vries	1	AIRTEG TELCO MODULE
2	B	1991-12-17	R. Berghammer	J. de Vries	2	AIRTEG-3 control (airCenter)
3	B	1991-12-17	R. Berghammer	J. de Vries	3	AIRTEG-3 control (airCenter)

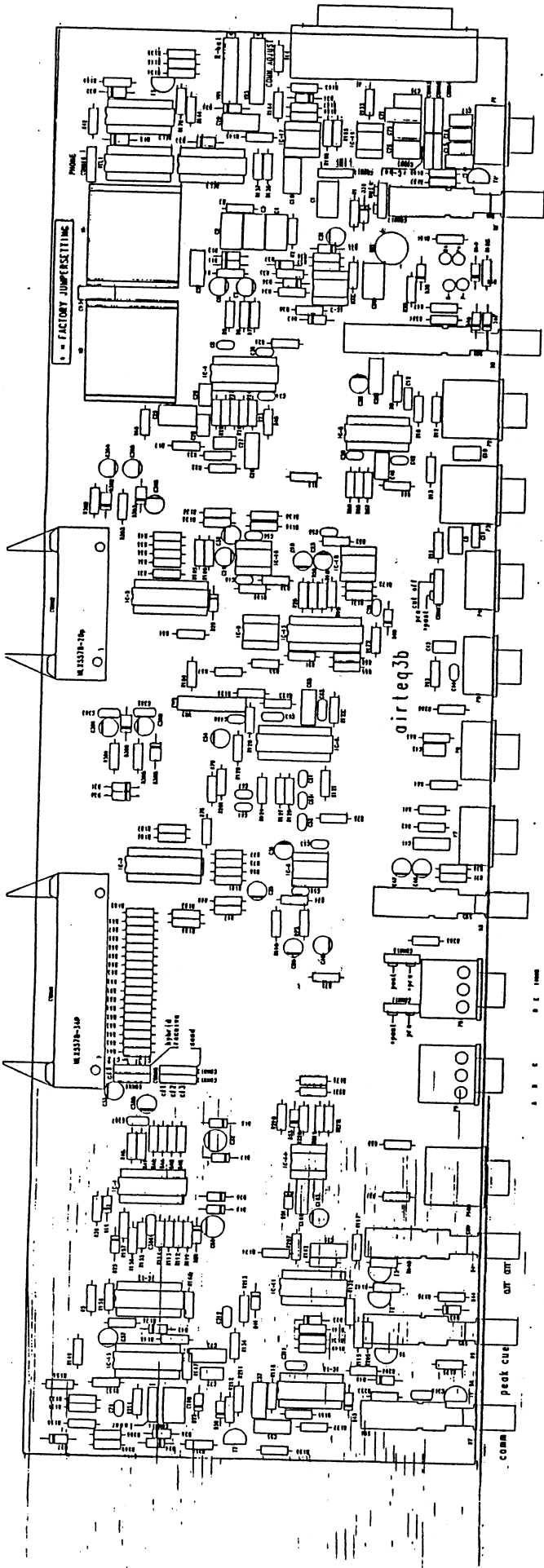


**DR**  
 Electronics by  
 HOLLAND  
 1382 GS WEEEP  
 02940-18014  
 Tel: 02940-16987  
 Fax: 02940-16987

THIS DRAWING REPLACES PREVIOUS ONES  
 INDEX a  
 MOD BY J. de Vries  
 DATE 25-04-1990  
 DESIGN J. de Vries  
 DRAWN P. Hilcke

AIRTEQ TELCO MODULE  
 Size Document Number  
 A AIRTEQ-3 vca (airt3vca)  
 Date: April 25, 1990 Sheet 4 of 4  
 REV b

SCHAKELAAR CONTROLE AIRTEQ3 "B"



SW2-BBM

SW4-MBB

SW2-BBM

SW2-BBM

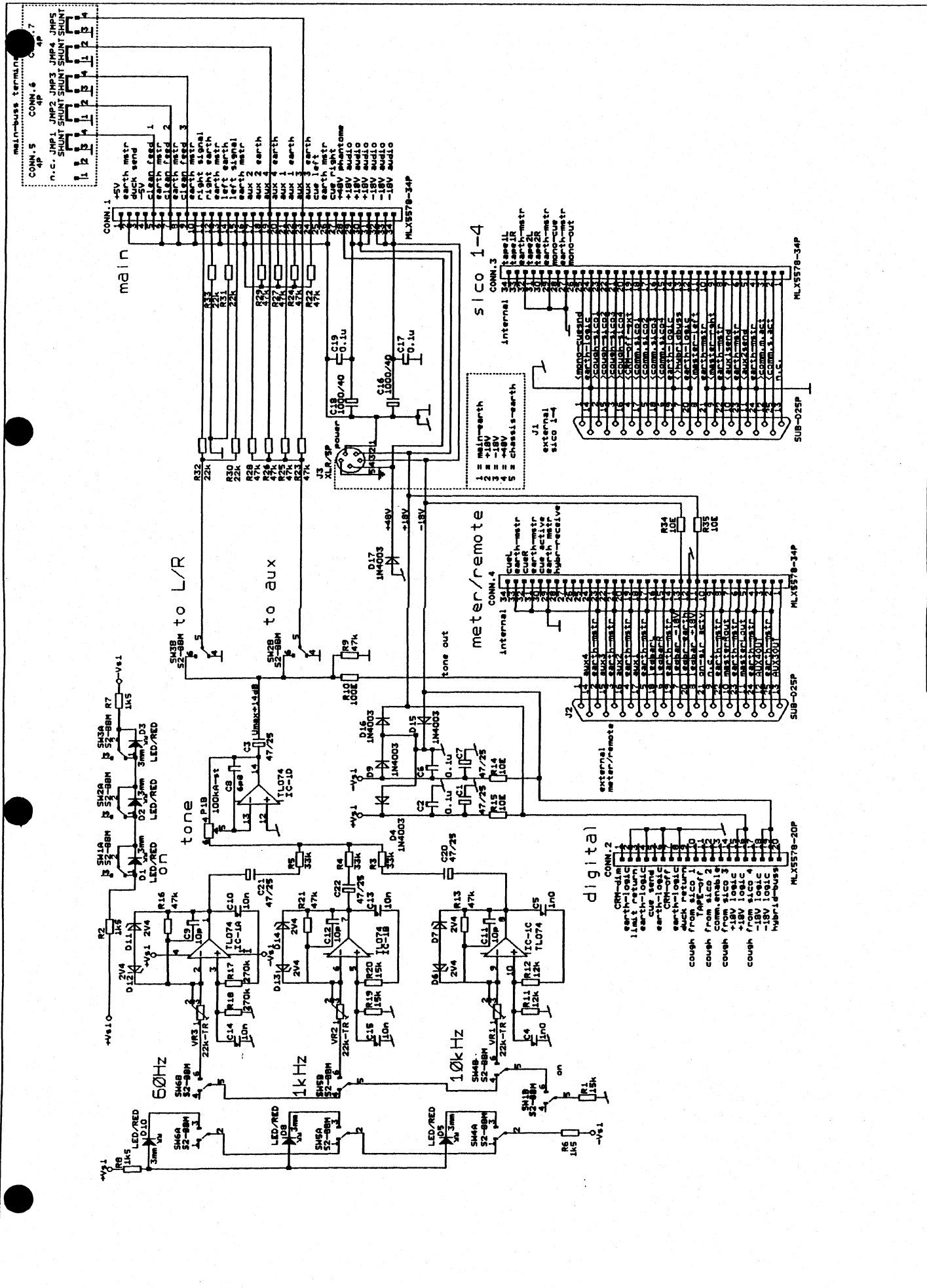
SW2-BBM

SW2-BBM



AIRTEQ

4



\* when a telco-module (AIRTEQ-3 pcb) is connected to the main-bus, remove the Jumper 1 (JMP1) and Jumper 2 (JMP2) from the main-bus terminator.  
 when the AUX3 option is installed, remove JMP5 from the main-bus terminator.  
 when the AUX4 option is installed, remove JMP4 from the main-bus terminator.

**DR**  
 Electronics by HOLLAND DRAMM J.V. v. Hezik J. de Vries  
 Tel: 02940-18014  
 Fax: 02940-18997  
 Date: 02-01-1989  
 Size Document Number: 8 B  
 AIRTEQ-4 tone (airteq4)  
 REV: 7  
 Date: June 25, 1989 Sheet 1 of 7

Quantity	Reference	Part	Sheetname	Sheet#	Filename
1	CONN.1	MLX5578-34P	<<<root>>>	1	AIRTEQ4A
1	CONN.2	MLX5578-20P	<<<root>>>	1	AIRTEQ4A
1	CONN.3	MLX5578-34P	<<<root>>>	1	AIRTEQ4A
1	CONN.4	MLX5578-34P	<<<root>>>	1	AIRTEQ4A
1	CONN.5	4P	<<<root>>>	1	AIRTEQ4A
1	CONN.6	4P	<<<root>>>	1	AIRTEQ4A
1	CONN.7	4P	<<<root>>>	1	AIRTEQ4A
1	C1	47/25	<<<root>>>	1	AIRTEQ4A
1	C2	0.1u	<<<root>>>	1	AIRTEQ4A
1	C3	47/25	<<<root>>>	1	AIRTEQ4A
1	C4	1n0	<<<root>>>	1	AIRTEQ4A
1	C5	1n0	<<<root>>>	1	AIRTEQ4A
1	C6	0.1u	<<<root>>>	1	AIRTEQ4A
1	C7	47/25	<<<root>>>	1	AIRTEQ4A
1	C8	6p8	<<<root>>>	1	AIRTEQ4A
1	C9	10p	<<<root>>>	1	AIRTEQ4A
1	C10	10n	<<<root>>>	1	AIRTEQ4A
1	C11	10p	<<<root>>>	1	AIRTEQ4A
1	C12	10p	<<<root>>>	1	AIRTEQ4A
1	C13	10n	<<<root>>>	1	AIRTEQ4A
1	C14	10n	<<<root>>>	1	AIRTEQ4A
1	C15	10n	<<<root>>>	1	AIRTEQ4A
1	C16	1000/40	<<<root>>>	1	AIRTEQ4A
1	C17	0.1u	<<<root>>>	1	AIRTEQ4A
1	C18	1000/40	<<<root>>>	1	AIRTEQ4A
1	C19	0.1u	<<<root>>>	1	AIRTEQ4A
1	C20	47/25	<<<root>>>	1	AIRTEQ4A
1	C21	47/25	<<<root>>>	1	AIRTEQ4A
1	C22	47/25	<<<root>>>	1	AIRTEQ4A
1	D1	LED/RED	<<<root>>>	1	AIRTEQ4A
1	D2	LED/RED	<<<root>>>	1	AIRTEQ4A
1	D3	LED/RED	<<<root>>>	1	AIRTEQ4A
1	D4	1N4003	<<<root>>>	1	AIRTEQ4A
1	D5	LED/RED	<<<root>>>	1	AIRTEQ4A
1	D6	2V4	<<<root>>>	1	AIRTEQ4A
1	D7	2V4	<<<root>>>	1	AIRTEQ4A
1	D8	LED/RED	<<<root>>>	1	AIRTEQ4A
1	D9	1N4003	<<<root>>>	1	AIRTEQ4A
1	D10	LED/RED	<<<root>>>	1	AIRTEQ4A
1	D11	2V4	<<<root>>>	1	AIRTEQ4A
1	D12	2V4	<<<root>>>	1	AIRTEQ4A
1	D13	2V4	<<<root>>>	1	AIRTEQ4A
1	D14	2V4	<<<root>>>	1	AIRTEQ4A
1	D15	1N4003	<<<root>>>	1	AIRTEQ4A
1	D16	1N4003	<<<root>>>	1	AIRTEQ4A
1	D17	1N4003	<<<root>>>	1	AIRTEQ4A
1	IC-1A	TL074	<<<root>>>	1	AIRTEQ4A
1	IC-1B	TL074	<<<root>>>	1	AIRTEQ4A
1	IC-1C	TL074	<<<root>>>	1	AIRTEQ4A
1	IC-1D	TL074	<<<root>>>	1	AIRTEQ4A
1	JMP1	SHUNT	<<<root>>>	1	AIRTEQ4A
1	JMP2	SHUNT	<<<root>>>	1	AIRTEQ4A
1	JMP3	SHUNT	<<<root>>>	1	AIRTEQ4A

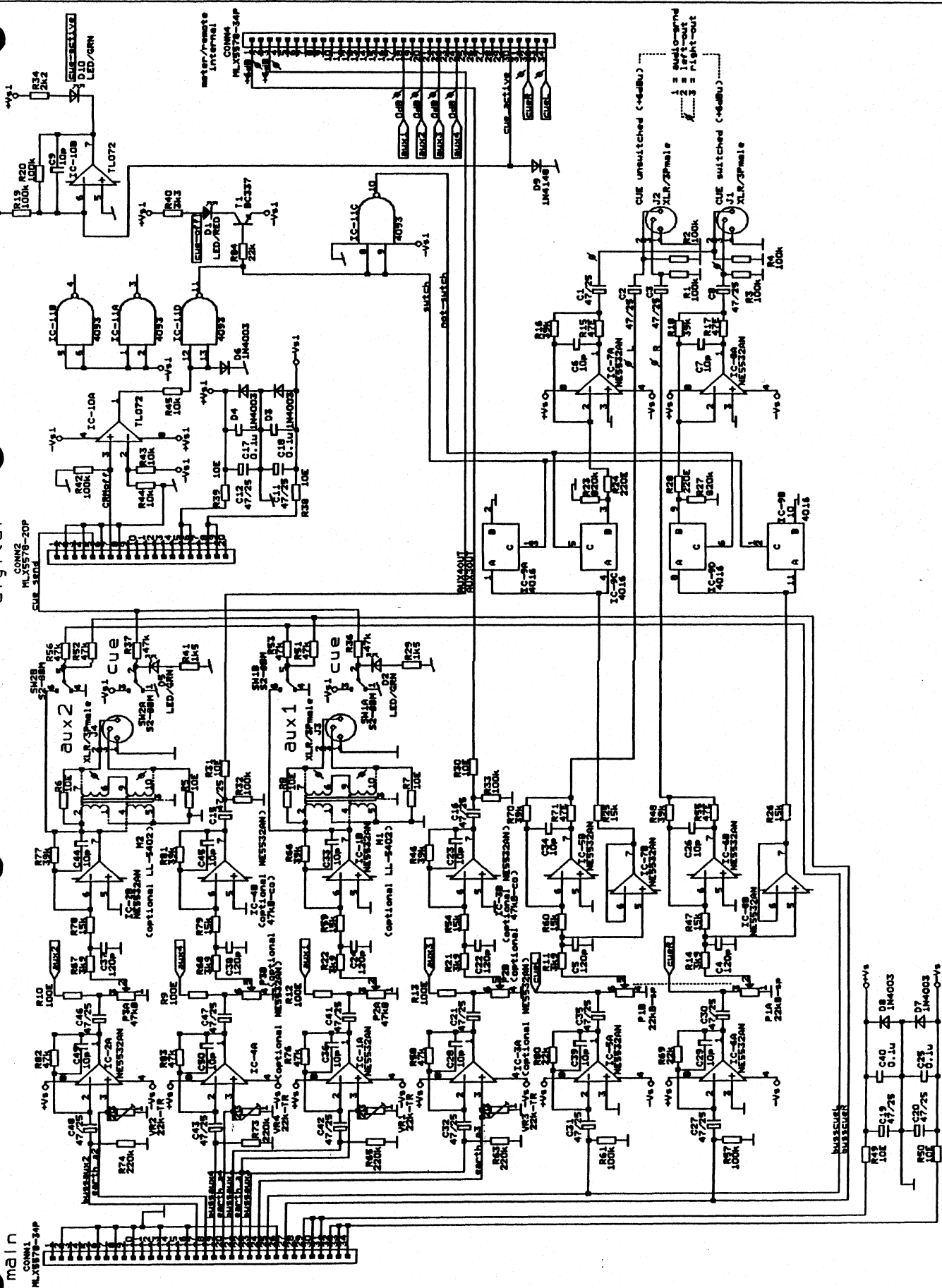
AIRTEQ

5

digital

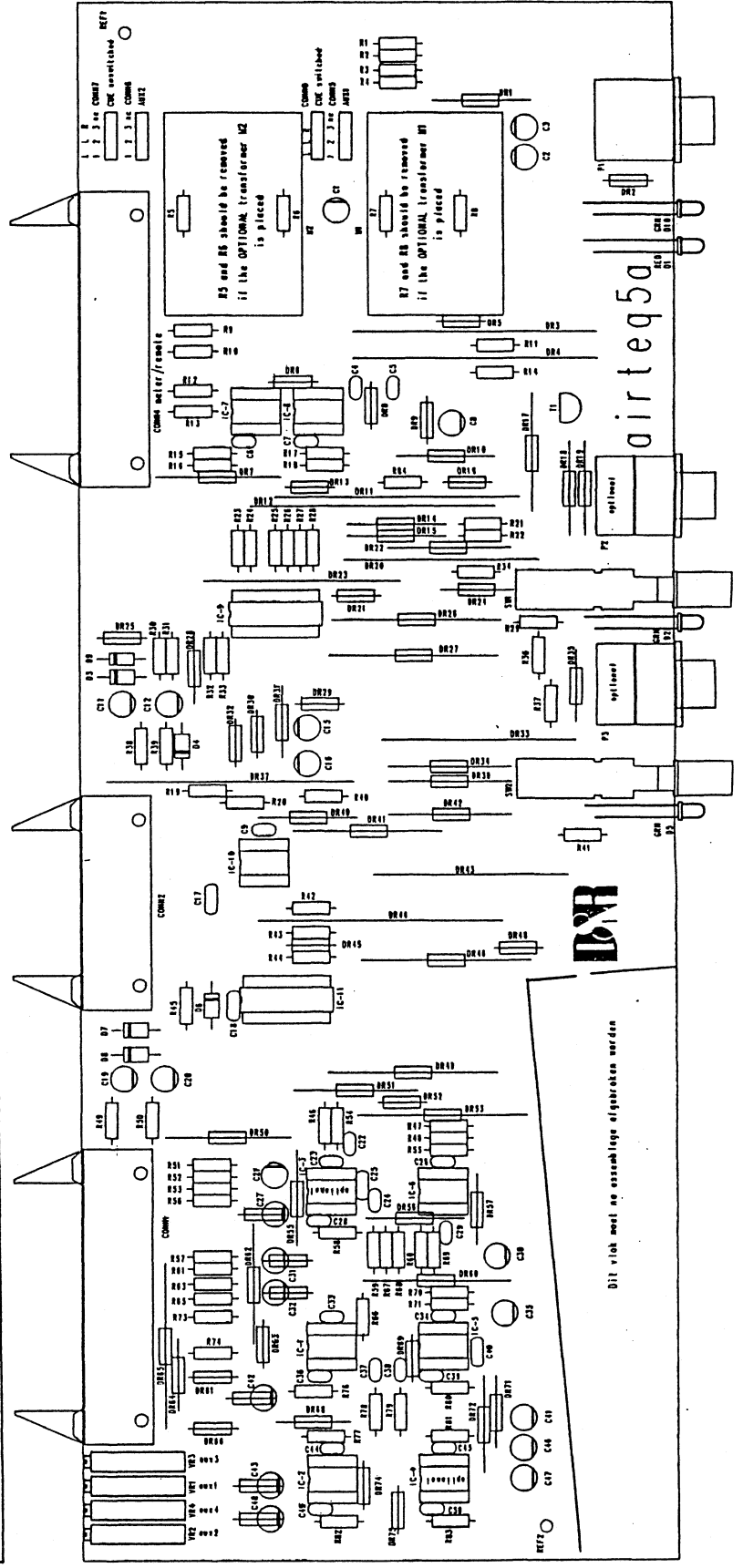
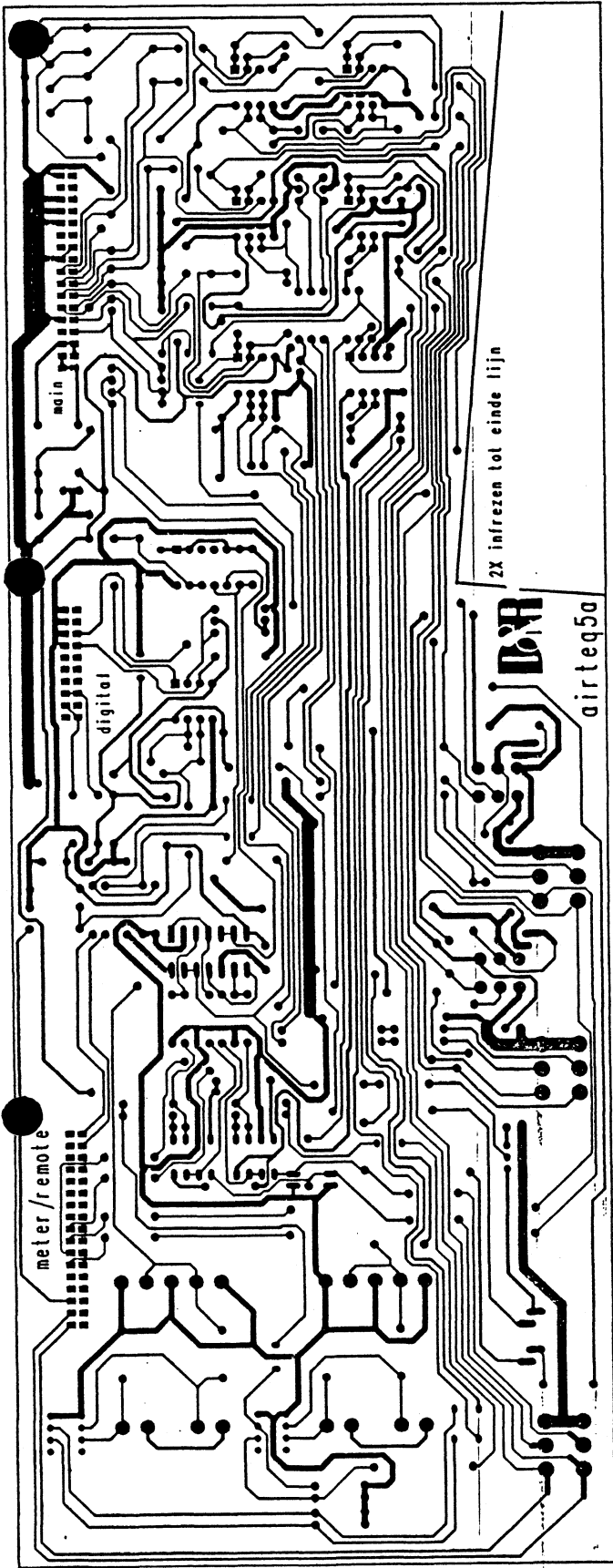
main  
CONN1  
MLX5576-34P

CONN2  
MLX5576-20P  
CONN3  
MLX5576-24P



IC-3 or IC-4 should ONLY be assembled, if the AUX3 or AUX4 option is installed  
 Read "PROCEDURE" ATTENTION  
 If IC-3 is installed, make sure you REMOVED Jumper AUX3 (JMP3) on the AIRTEG-4 (stone) pcb  
 If IC-4 is installed, make sure you REMOVED Jumper AUX4 (JMP4) on the AIRTEG-4 (stone) pcb  
 If IC-5 is installed, make sure you REMOVED Jumper AUX5 (JMP5) on the AIRTEG-5 (stone) pcb

DR		ELECTRONICS BY	
MOLLAHO		MOLLAHO	
J. G. V. HERRIK, J., SR. V.P.E.S.		J. G. V. HERRIK, J., SR. V.P.E.S.	
DATE: JULY 26, 1989 SHEET 2 OF 7		DATE: JULY 26, 1989 SHEET 2 OF 7	
REV: AIRTEG-5 aux + cue (AIRTEG)		REV: AIRTEG-5 aux + cue (AIRTEG)	
SIZE: 11x17-1/2		SIZE: 11x17-1/2	
PART NUMBER: 100-1000		PART NUMBER: 100-1000	
DRAWING NUMBER: 100-1000		DRAWING NUMBER: 100-1000	
PROJECT NUMBER: 100-1000		PROJECT NUMBER: 100-1000	
ISSUE: 100-1000		ISSUE: 100-1000	
DATE: 100-1000		DATE: 100-1000	
BY: 100-1000		BY: 100-1000	
CHECKED: 100-1000		CHECKED: 100-1000	
APPROVED: 100-1000		APPROVED: 100-1000	
TITLE: AIRTEG MASTER MODULE		TITLE: AIRTEG MASTER MODULE	



- DR54
- DR55
- DR70
- IC7
- IC8
- IC9
- IC10
- IC11
- IC12
- IC13
- IC14
- IC15
- IC16

Quantity	Reference	Part	Sheetname	Sheet#	Filename
1	CONN1	MLX5578-34P	<<<root>>>	2	AIRTEQ5
1	CONN2	MLX5578-20P	<<<root>>>	2	AIRTEQ5
1	CONN4	MLX5578-34P	<<<root>>>	2	AIRTEQ5
1	C1	47/25	<<<root>>>	2	AIRTEQ5
1	C2	47/25	<<<root>>>	2	AIRTEQ5
1	C3	47/25	<<<root>>>	2	AIRTEQ5
1	C4	120p	<<<root>>>	2	AIRTEQ5
1	C5	120p	<<<root>>>	2	AIRTEQ5
1	C6	10p	<<<root>>>	2	AIRTEQ5
1	C7	10p	<<<root>>>	2	AIRTEQ5
1	C8	47/25	<<<root>>>	2	AIRTEQ5
1	C9	10p	<<<root>>>	2	AIRTEQ5
1	C11	47/25	<<<root>>>	2	AIRTEQ5
1	C12	47/25	<<<root>>>	2	AIRTEQ5
1	C15	47/25	<<<root>>>	2	AIRTEQ5
1	C16	47/25	<<<root>>>	2	AIRTEQ5
1	C17	0.1u	<<<root>>>	2	AIRTEQ5
1	C18	0.1u	<<<root>>>	2	AIRTEQ5
1	C19	47/25	<<<root>>>	2	AIRTEQ5
1	C20	47/25	<<<root>>>	2	AIRTEQ5
1	C21	47/25	<<<root>>>	2	AIRTEQ5
1	C22	120p	<<<root>>>	2	AIRTEQ5
1	C23	10p	<<<root>>>	2	AIRTEQ5
1	C24	120p	<<<root>>>	2	AIRTEQ5
1	C25	0.1u	<<<root>>>	2	AIRTEQ5
1	C26	10p	<<<root>>>	2	AIRTEQ5
1	C27	47/25	<<<root>>>	2	AIRTEQ5
1	C28	10p	<<<root>>>	2	AIRTEQ5
1	C29	10p	<<<root>>>	2	AIRTEQ5
1	C30	47/25	<<<root>>>	2	AIRTEQ5
1	C31	47/25	<<<root>>>	2	AIRTEQ5
1	C32	47/25	<<<root>>>	2	AIRTEQ5
1	C33	10p	<<<root>>>	2	AIRTEQ5
1	C34	10p	<<<root>>>	2	AIRTEQ5
1	C35	47/25	<<<root>>>	2	AIRTEQ5
1	C36	10p	<<<root>>>	2	AIRTEQ5
1	C37	120p	<<<root>>>	2	AIRTEQ5
1	C38	120p	<<<root>>>	2	AIRTEQ5
1	C39	10p	<<<root>>>	2	AIRTEQ5
1	C40	0.1u	<<<root>>>	2	AIRTEQ5
1	C41	47/25	<<<root>>>	2	AIRTEQ5
1	C42	47/25	<<<root>>>	2	AIRTEQ5
1	C43	47/25	<<<root>>>	2	AIRTEQ5
1	C44	10p	<<<root>>>	2	AIRTEQ5
1	C45	10p	<<<root>>>	2	AIRTEQ5
1	C46	47/25	<<<root>>>	2	AIRTEQ5
1	C47	47/25	<<<root>>>	2	AIRTEQ5
1	C48	47/25	<<<root>>>	2	AIRTEQ5
1	C49	10p	<<<root>>>	2	AIRTEQ5
1	C50	10p	<<<root>>>	2	AIRTEQ5
1	D1	LED/RED	<<<root>>>	2	AIRTEQ5
1	D2	LED/GRN	<<<root>>>	2	AIRTEQ5
1	D3	1N4003	<<<root>>>	2	AIRTEQ5

Quantity	Reference	Part	Sheetname	Sheet#	Filename
1	D4	1N4003	<<<root>>>	2	AIRTEQ5
1	D5	LED/GRN	<<<root>>>	2	AIRTEQ5
1	D6	1N4003	<<<root>>>	2	AIRTEQ5
1	D7	1N4003	<<<root>>>	2	AIRTEQ5
1	D8	1N4003	<<<root>>>	2	AIRTEQ5
1	D9	1N4148	<<<root>>>	2	AIRTEQ5
1	D10	LED/GRN	<<<root>>>	2	AIRTEQ5
1	IC-1A	NE5532AN	<<<root>>>	2	AIRTEQ5
1	IC-1B	NE5532AN	<<<root>>>	2	AIRTEQ5
1	IC-2A	NE5532AN	<<<root>>>	2	AIRTEQ5
1	IC-2B	NE5532AN	<<<root>>>	2	AIRTEQ5
1	IC-3A	(optional NE5532AN)	<<<root>>>	2	AIRTEQ5
1	IC-3B	(optional NE5532AN)	<<<root>>>	2	AIRTEQ5
1	IC-4A	(optional NE5532AN)	<<<root>>>	2	AIRTEQ5
1	IC-4B	(optional NE5532AN)	<<<root>>>	2	AIRTEQ5
1	IC-5A	NE5532AN	<<<root>>>	2	AIRTEQ5
1	IC-5B	NE5532AN	<<<root>>>	2	AIRTEQ5
1	IC-6A	NE5532AN	<<<root>>>	2	AIRTEQ5
1	IC-6B	NE5532AN	<<<root>>>	2	AIRTEQ5
1	IC-7A	NE5532AN	<<<root>>>	2	AIRTEQ5
1	IC-7B	NE5532AN	<<<root>>>	2	AIRTEQ5
1	IC-8A	NE5532AN	<<<root>>>	2	AIRTEQ5
1	IC-8B	NE5532AN	<<<root>>>	2	AIRTEQ5
1	IC-9A	4016	<<<root>>>	2	AIRTEQ5
1	IC-9B	4016	<<<root>>>	2	AIRTEQ5
1	IC-9C	4016	<<<root>>>	2	AIRTEQ5
1	IC-9D	4016	<<<root>>>	2	AIRTEQ5
1	IC-10A	TL072	<<<root>>>	2	AIRTEQ5
1	IC-10B	TL072	<<<root>>>	2	AIRTEQ5
1	IC-11A	4093	<<<root>>>	2	AIRTEQ5
1	IC-11B	4093	<<<root>>>	2	AIRTEQ5
1	IC-11C	4093	<<<root>>>	2	AIRTEQ5
1	IC-11D	4093	<<<root>>>	2	AIRTEQ5
1	J1	XLR/3Pmale	<<<root>>>	2	AIRTEQ5
1	J2	XLR/3Pmale	<<<root>>>	2	AIRTEQ5
1	J3	XLR/3Pmale	<<<root>>>	2	AIRTEQ5
1	J4	XLR/3Pmale	<<<root>>>	2	AIRTEQ5
1	M1	(optional LL-5402)	<<<root>>>	2	AIRTEQ5
1	M2	(optional LL-5402)	<<<root>>>	2	AIRTEQ5
1	P1A	22kB-sp	<<<root>>>	2	AIRTEQ5
1	P1B	22kB-sp	<<<root>>>	2	AIRTEQ5
1	P2A	47kB	<<<root>>>	2	AIRTEQ5
1	P2B	(optional 47kB-co)	<<<root>>>	2	AIRTEQ5
1	P3A	47kB	<<<root>>>	2	AIRTEQ5
1	P3B	(optional 47kB-co)	<<<root>>>	2	AIRTEQ5
1	R1	100k	<<<root>>>	2	AIRTEQ5
1	R2	100k	<<<root>>>	2	AIRTEQ5
1	R3	100k	<<<root>>>	2	AIRTEQ5
1	R4	100k	<<<root>>>	2	AIRTEQ5
1	R5	10E	<<<root>>>	2	AIRTEQ5
1	R6	10E	<<<root>>>	2	AIRTEQ5
1	R7	10E	<<<root>>>	2	AIRTEQ5
1	R8	10E	<<<root>>>	2	AIRTEQ5



Quantity	Reference	Part	Sheetname	Sheet#	Filename
1	R9	100E	<<<root>>	2	AIRTEQ5
1	R10	100E	<<<root>>	2	AIRTEQ5
1	R11	3k9	<<<root>>	2	AIRTEQ5
1	R12	100E	<<<root>>	2	AIRTEQ5
1	R13	100E	<<<root>>	2	AIRTEQ5
1	R14	3k9	<<<root>>	2	AIRTEQ5
1	R15	47E	<<<root>>	2	AIRTEQ5
1	R16	39k	<<<root>>	2	AIRTEQ5
1	R17	47E	<<<root>>	2	AIRTEQ5
1	R18	39k	<<<root>>	2	AIRTEQ5
1	R19	100k	<<<root>>	2	AIRTEQ5
1	R20	100k	<<<root>>	2	AIRTEQ5
1	R21	3k9	<<<root>>	2	AIRTEQ5
1	R22	3k9	<<<root>>	2	AIRTEQ5
1	R23	820k	<<<root>>	2	AIRTEQ5
1	R24	220E	<<<root>>	2	AIRTEQ5
1	R25	15k	<<<root>>	2	AIRTEQ5
1	R26	15k	<<<root>>	2	AIRTEQ5
1	R27	820k	<<<root>>	2	AIRTEQ5
1	R28	220E	<<<root>>	2	AIRTEQ5
1	R29	1k5	<<<root>>	2	AIRTEQ5
1	R30	10E	<<<root>>	2	AIRTEQ5
1	R31	10E	<<<root>>	2	AIRTEQ5
1	R32	100k	<<<root>>	2	AIRTEQ5
1	R33	100k	<<<root>>	2	AIRTEQ5
1	R34	2k2	<<<root>>	2	AIRTEQ5
1	R36	47k	<<<root>>	2	AIRTEQ5
1	R37	47k	<<<root>>	2	AIRTEQ5
1	R38	10E	<<<root>>	2	AIRTEQ5
1	R39	10E	<<<root>>	2	AIRTEQ5
1	R40	3k3	<<<root>>	2	AIRTEQ5
1	R41	1k5	<<<root>>	2	AIRTEQ5
1	R42	100k	<<<root>>	2	AIRTEQ5
1	R43	10k	<<<root>>	2	AIRTEQ5
1	R44	10k	<<<root>>	2	AIRTEQ5
1	R45	10k	<<<root>>	2	AIRTEQ5
1	R46	39k	<<<root>>	2	AIRTEQ5
1	R47	15k	<<<root>>	2	AIRTEQ5
1	R48	39k	<<<root>>	2	AIRTEQ5
1	R49	10E	<<<root>>	2	AIRTEQ5
1	R50	10E	<<<root>>	2	AIRTEQ5
1	R51	47k	<<<root>>	2	AIRTEQ5
1	R52	47k	<<<root>>	2	AIRTEQ5
1	R53	47k	<<<root>>	2	AIRTEQ5
1	R54	15k	<<<root>>	2	AIRTEQ5
1	R55	47E	<<<root>>	2	AIRTEQ5
1	R56	47k	<<<root>>	2	AIRTEQ5
1	R57	100k	<<<root>>	2	AIRTEQ5
1	R58	47k	<<<root>>	2	AIRTEQ5
1	R59	15k	<<<root>>	2	AIRTEQ5
1	R60	15k	<<<root>>	2	AIRTEQ5
1	R61	100k	<<<root>>	2	AIRTEQ5
1	R63	220k	<<<root>>	2	AIRTEQ5

Quantity	Reference	Part	Sheetname	Sheet#	Filename
1	R65	220k	<<<root>>	2	AIRTEQ5
1	R66	39k	<<<root>>	2	AIRTEQ5
1	R67	3k9	<<<root>>	2	AIRTEQ5
1	R68	3k9	<<<root>>	2	AIRTEQ5
1	R69	22k	<<<root>>	2	AIRTEQ5
1	R70	39k	<<<root>>	2	AIRTEQ5
1	R71	47E	<<<root>>	2	AIRTEQ5
1	R73	220k	<<<root>>	2	AIRTEQ5
1	R74	220k	<<<root>>	2	AIRTEQ5
1	R76	47k	<<<root>>	2	AIRTEQ5
1	R77	39k	<<<root>>	2	AIRTEQ5
1	R78	15k	<<<root>>	2	AIRTEQ5
1	R79	15k	<<<root>>	2	AIRTEQ5
1	R80	22k	<<<root>>	2	AIRTEQ5
1	R81	39k	<<<root>>	2	AIRTEQ5
1	R82	47k	<<<root>>	2	AIRTEQ5
1	R83	47k	<<<root>>	2	AIRTEQ5
1	R84	22k	<<<root>>	2	AIRTEQ5
1	SW1A	S2-BBM	<<<root>>	2	AIRTEQ5
1	SW1B	S2-BBM	<<<root>>	2	AIRTEQ5
1	SW2A	S2-BBM	<<<root>>	2	AIRTEQ5
1	SW2B	S2-BBM	<<<root>>	2	AIRTEQ5
1	T1	BC337	<<<root>>	2	AIRTEQ5
1	VR1	22k-TR	<<<root>>	2	AIRTEQ5
1	VR2	22k-TR	<<<root>>	2	AIRTEQ5
1	VR3	22k-TR	<<<root>>	2	AIRTEQ5
1	VR4	22k-TR	<<<root>>	2	AIRTEQ5

AIRTEQ

6