

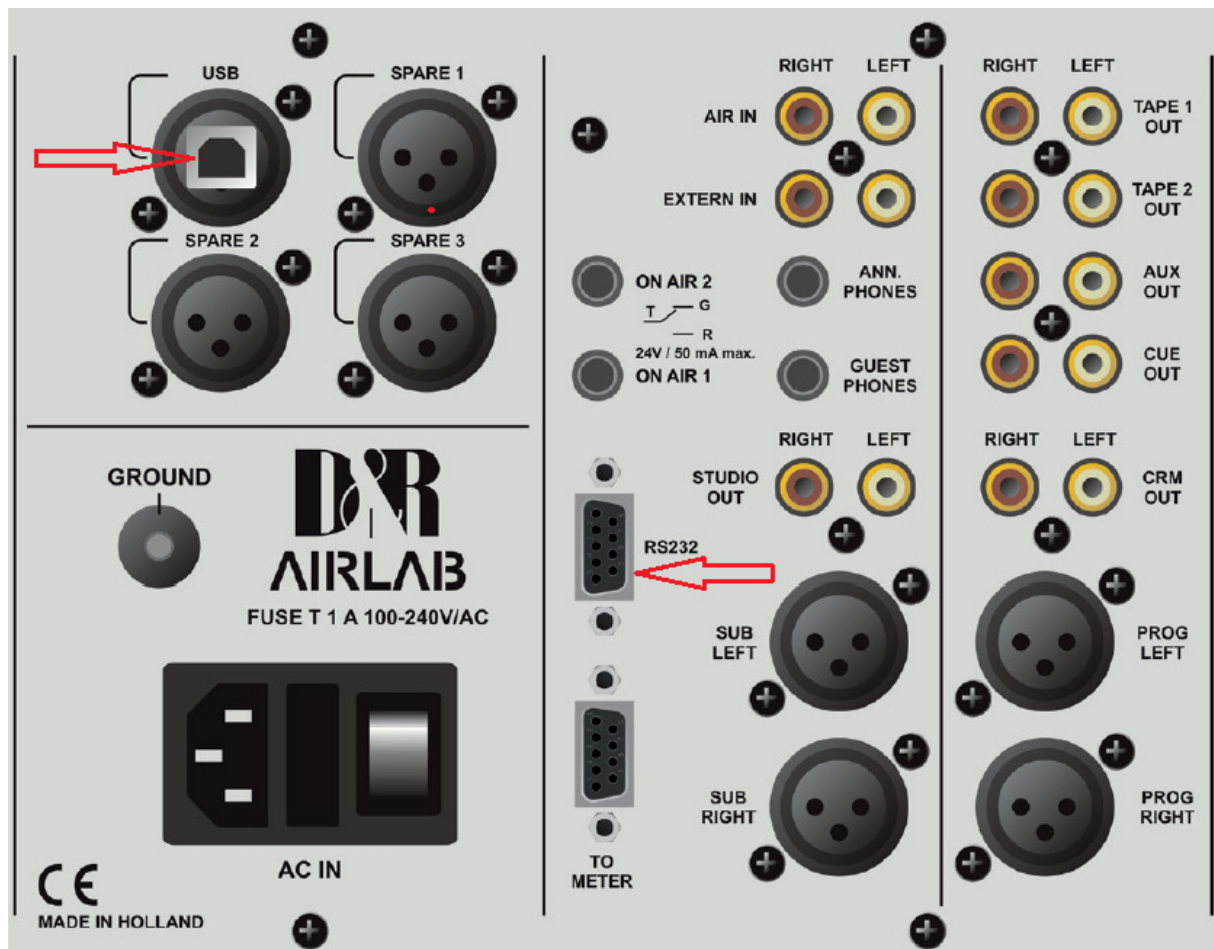
AIRCAST + AIRLAB Quickstart



Background information

In the days the Airlab was developed there only was a RS232 connector on the back available for module signals and configuring the console. The new Airlab MKII is extended with a control section (24x switches + 1x rotary encoder) and possible USB audio channels (4 max) all interfacing by one USB connector at the backpanel.

The control section is derived from the D&R Airence console and should be configured in Aircast as a Airence Remote Control.



- **USB**
 - Stereo Audio Codec (max 4 channels)
 - Metering (Airlab Meters v1.7)
 - Control Section (24x switches, 1x rotary encoder)
- **RS232**
 - Console Configuration (Airlab Control Center v3.1)
 - Module Signals (Faderstart, On, Cue, OnAir...)

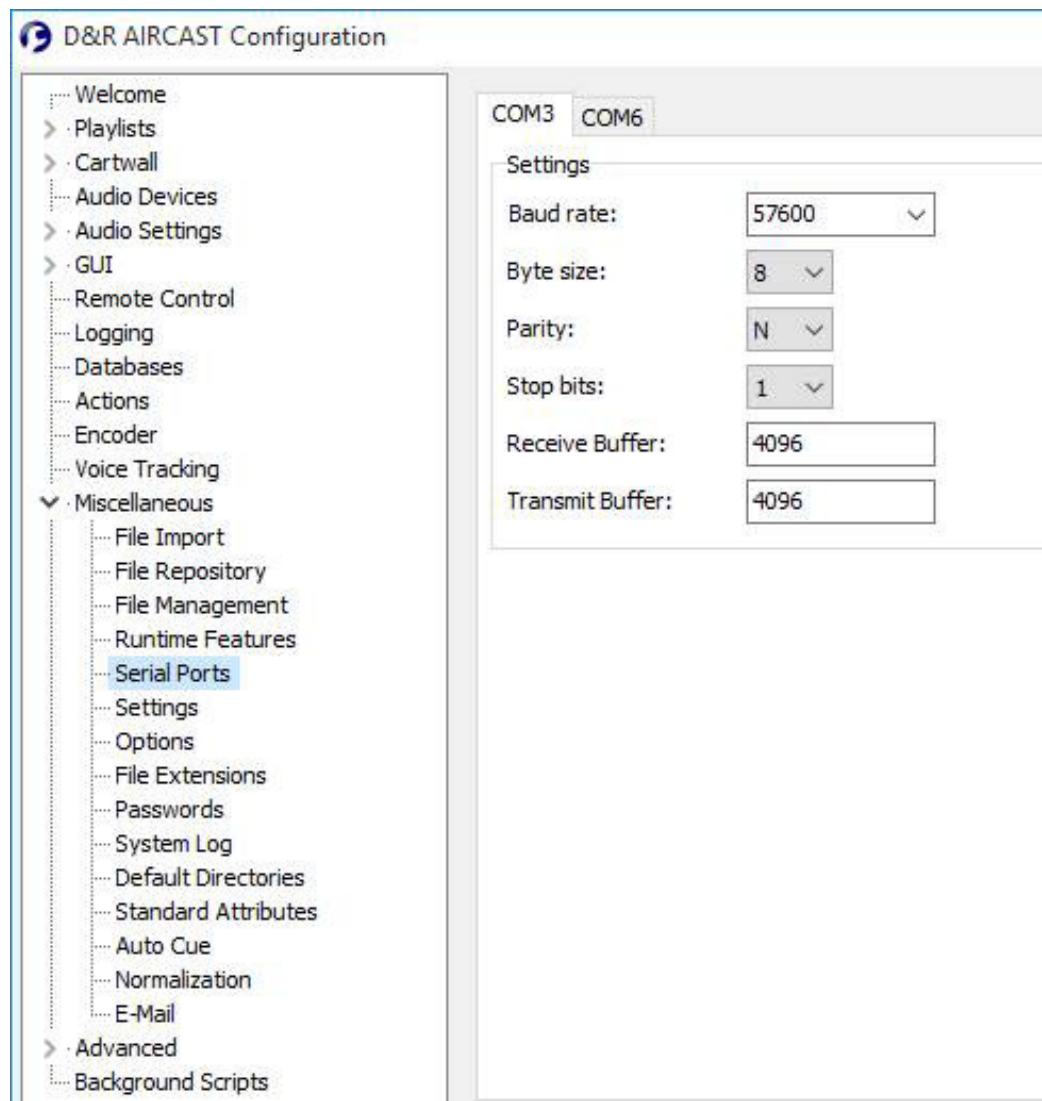
Hardware connections

1. Connect a USB cable between your Airlab and your PC.
2. Connect a serial cable between your Airlab (RS232-port) and your PC (USB-to-Serial cable is included in your Airlab delivery)



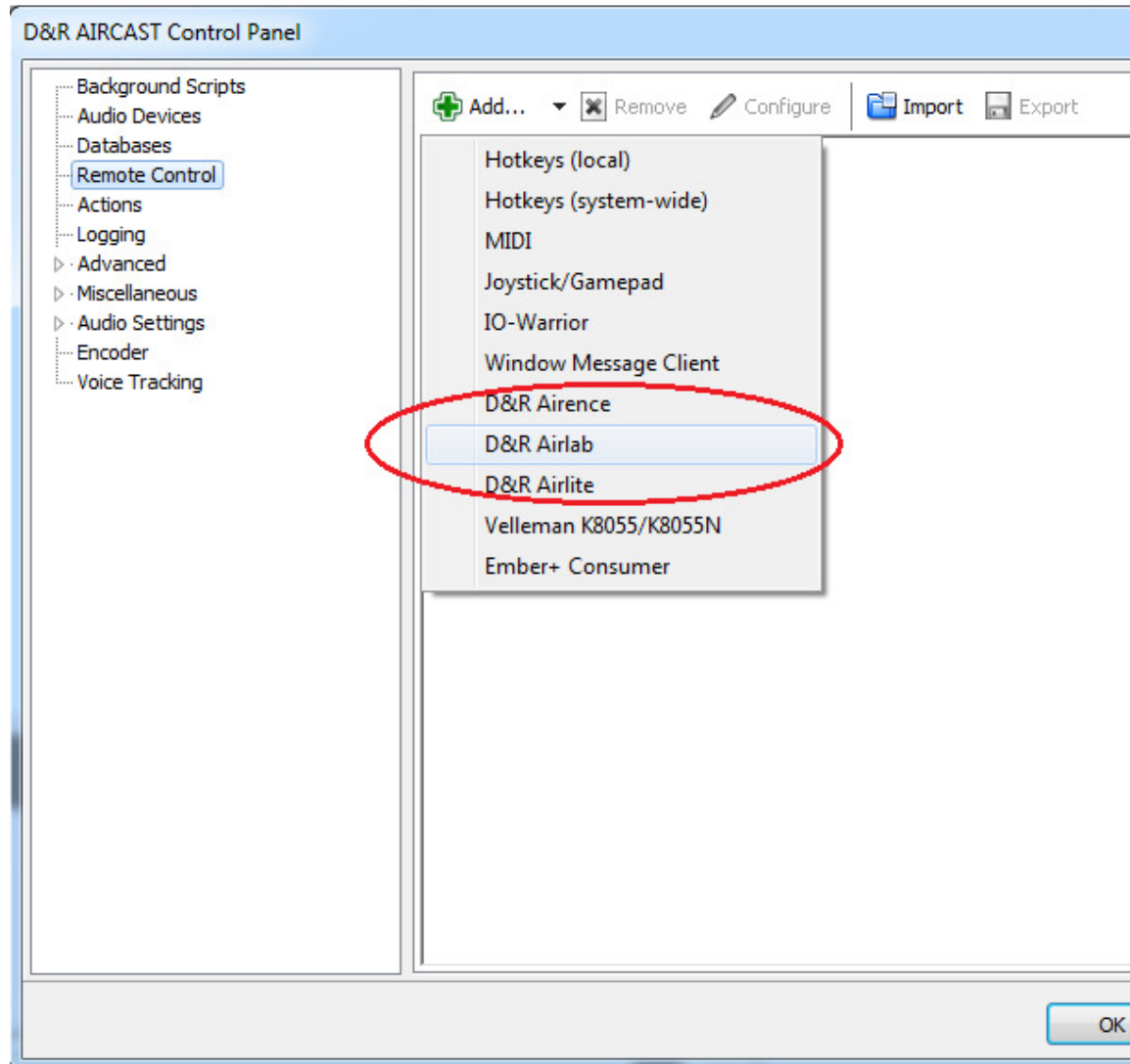
RS232 Configuration

1. Start the application **D&R Aircast Configuration**.
2. Check if your serial COM port is set to 57600 Baudrate in **Miscellaneous->Serial Ports**. (COM port of the USB-to-serial cable. Check in *Windows Device Manager*)
3. Click Save and exit the application.



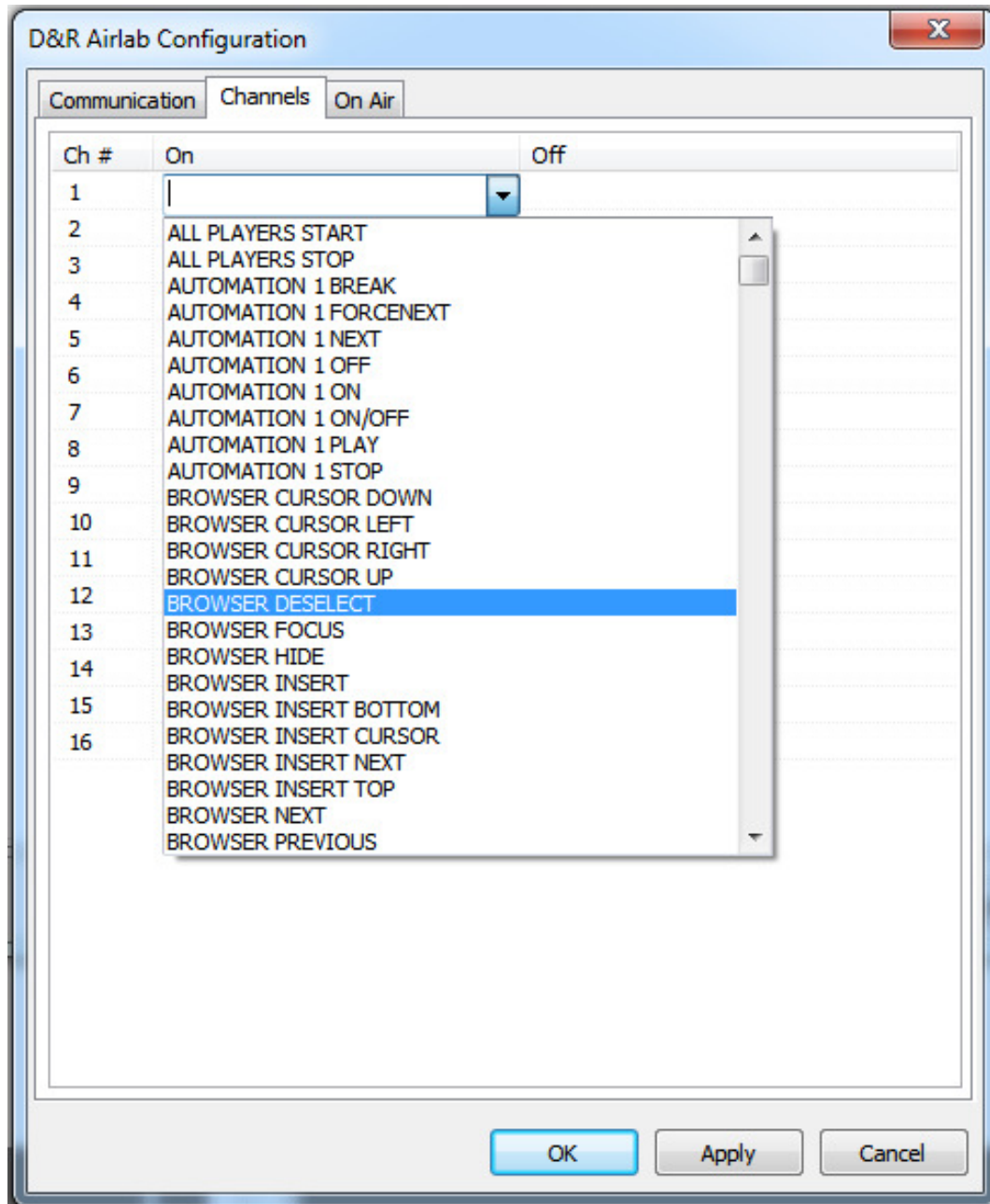
Remote Controls

1. Open *Aircast*
2. Add a D&R Airlab remote from **Control Panel -> Remote Control -> Add -> D&R Airlab**
3. Add a D&R Airence remote from **Control Panel -> Remote Control -> Add -> D&R Airence**



D&R Airlab Configuration (Faderstarts)

1. Select the COM port of the USB-to-serial cable in the **Communication** tab.
2. In the **Channels** tab you find 16x faderstart (On) and faderstop (Off) signals.
3. You can attach internal Aircast functions to the Fader start/stop signals here.



D&R Airence Configuration (Control Section)

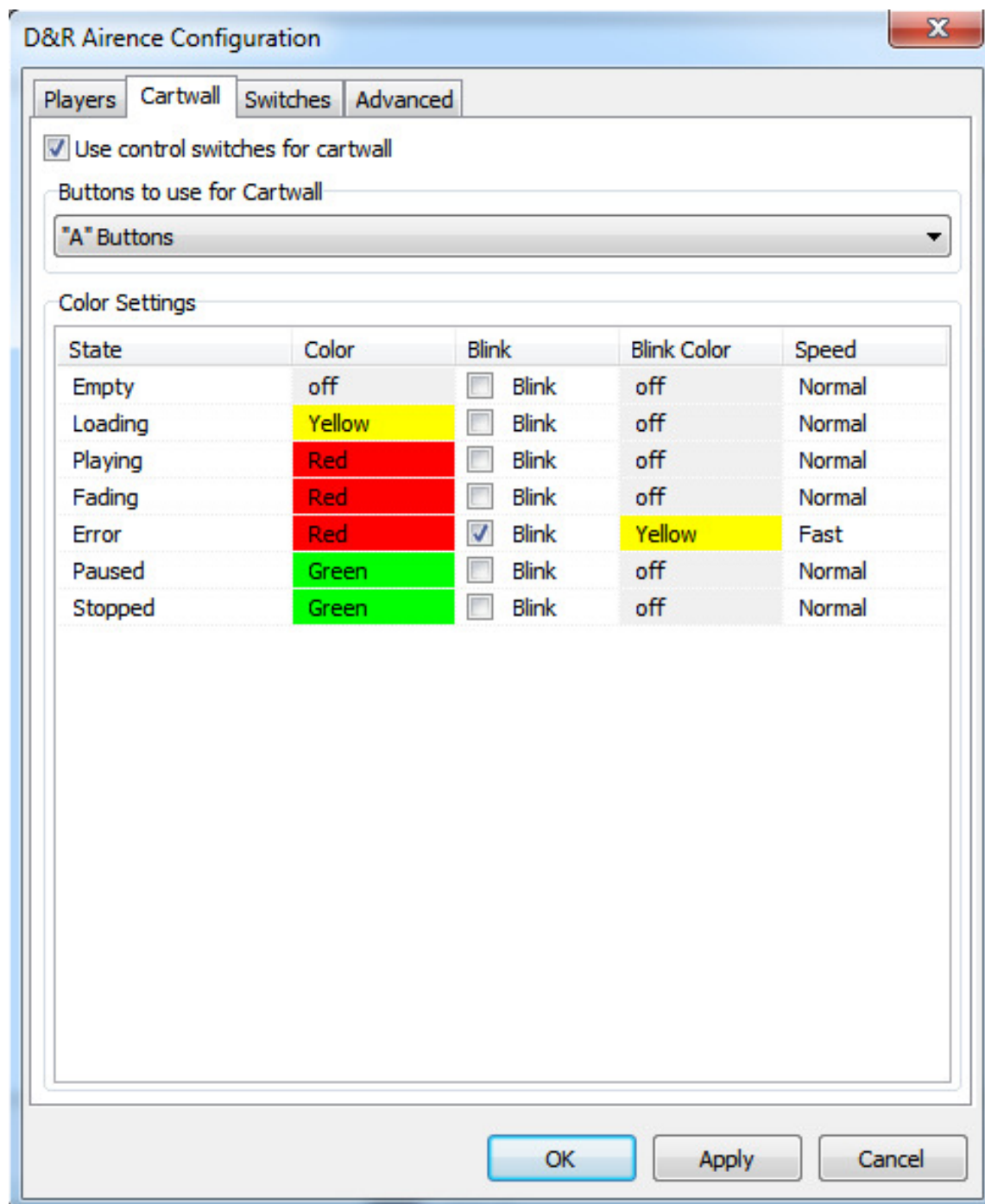
Cartwall

In the **Cartwall** tab you can configure the functionality of the 24 control switches.

Switches are numbered from top to bottom, left to right 1..24.

- **Use control switches for cartwall**
 - The control buttons are assigned directly to the cartwall for start/stop jingles.

In the **Color Settings** you can configure the behaviour of the LED behind the control switch for all separate States. LED's can be red, green or off and blink in slow, normal and fast mode.



The screenshot shows the 'D&R Airence Configuration' window with the 'Cartwall' tab selected. The 'Use control switches for cartwall' checkbox is checked. Below it, a dropdown menu is set to '"A" Buttons'. The 'Color Settings' section contains a table with the following data:

State	Color	Blink	Blink Color	Speed
Empty	off	<input type="checkbox"/> Blink	off	Normal
Loading	Yellow	<input type="checkbox"/> Blink	off	Normal
Playing	Red	<input type="checkbox"/> Blink	off	Normal
Fading	Red	<input type="checkbox"/> Blink	off	Normal
Error	Red	<input checked="" type="checkbox"/> Blink	Yellow	Fast
Paused	Green	<input type="checkbox"/> Blink	off	Normal
Stopped	Green	<input type="checkbox"/> Blink	off	Normal

At the bottom of the window are 'OK', 'Apply', and 'Cancel' buttons.

Switches

In the **Switches** tab you can assign any function available in Aircast to one of the 24 control switches on the Airlab. In such a way you can use the control switches as a remote control for Aircast.

(NOTE: Ignore 25 -38.. Airence specific)

The screenshot shows a window titled "D&R Airence Configuration" with a close button (X) in the top right corner. The window has four tabs: "Players", "Cartwall", "Switches" (which is selected), and "Advanced". The "Switches" tab contains a table with 25 rows, numbered 1 to 25 in the first column. The second column is labeled "On" and the third column is labeled "Off". The table is currently empty. At the bottom of the window, there are three buttons: "OK", "Apply", and "Cancel".

SW #	On	Off
1		
2		
3		
4		
5		
6		
7		
8		
9		
10		
11		
12		
13		
14		
15		
16		
17		
18		
19		
20		
21		
22		
23		
24		
25		