



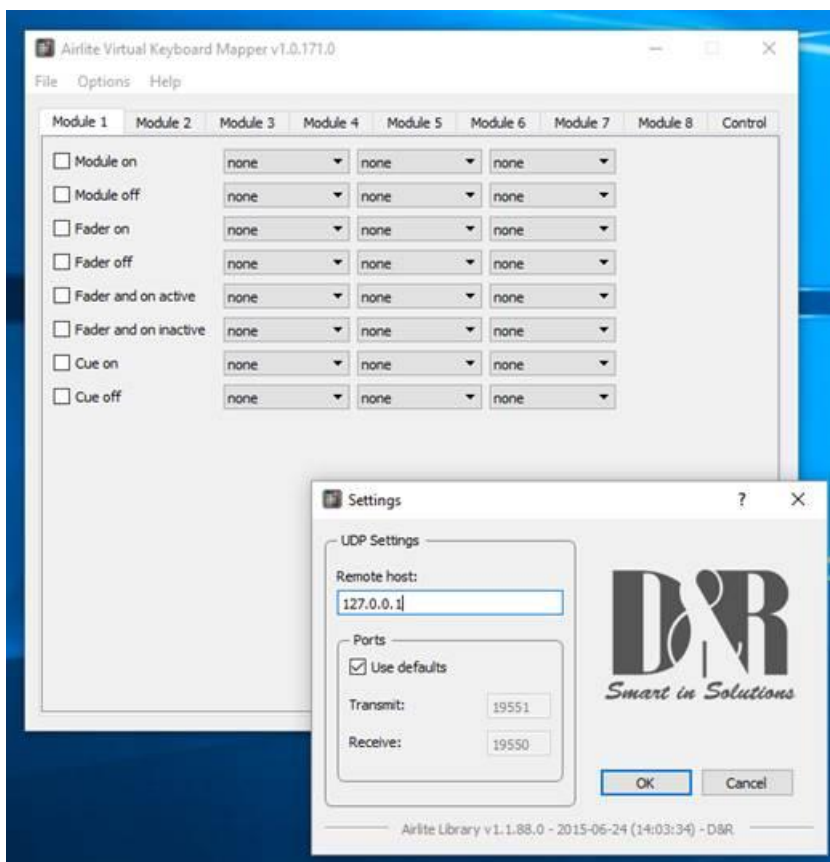
VIRTUAL KEYBOARD MAPPER MANUAL FOR ANY PLAY-OUT SYSTEM

Please follow below instructions:

- 1) Install **Airlite Control** (it is required!!)
 - a. INSTALLER: <http://www.d-r.nl/wiki/dokudata/software/Airlite%20Control%20v1.0.485.0%20-20Setup.exe>
 - b. MANUAL: <http://www.d-r.nl/wiki/dokudata/software/Manual%20Airlite%20Control.pdf>
- 2) Install **Airlite Virtual Keyboard Mapper**
 - a. INSTALLER: <http://www.d-r.nl/wiki/dokudata/software/Airlite%20Virtual%20Keyboard%20Mapper%20v1.0.171.0%20-%20Setup.exe>
 - b. MANUAL: --not available--

Airlite Virtual Keyboard Mapper – SETUP:

0. Make sure **Airlite Control** application is **running**.
1. Start Airlite Virtual Keyboard Mapper by double clicking on the desktop icon.
2. Fill in the local host IP(127.0.0.1) in the Remote host field. Go to **Options->Communication**.
3. Press [OK]
4. On ever tab (Module 1..2....8 and Control) you can assign keyboard shortcuts to Airlite functions.
5. Presets can be saved and recalled in the **File** menu.



Any questions left.... mailto: mail@d-r.nl